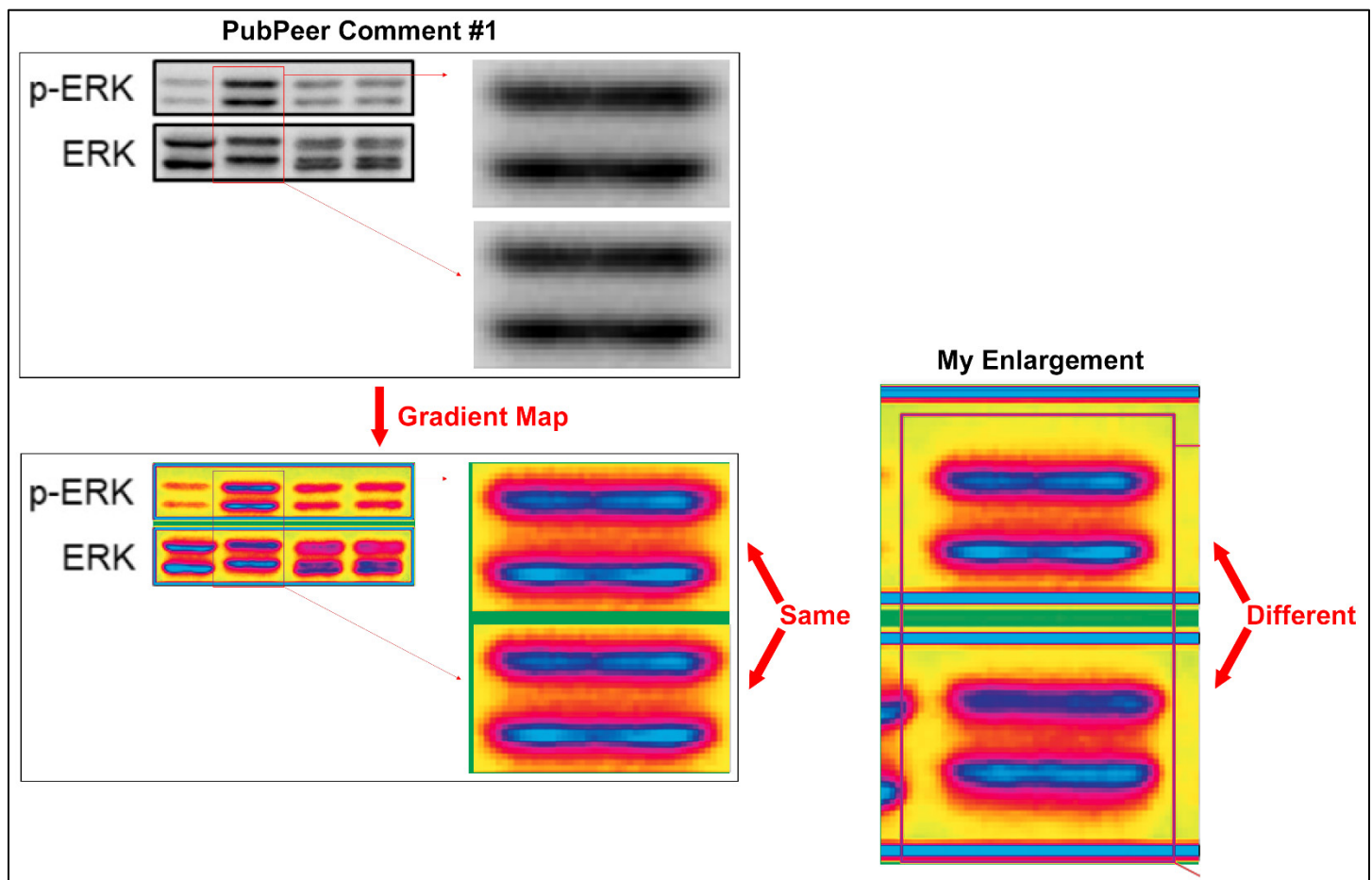
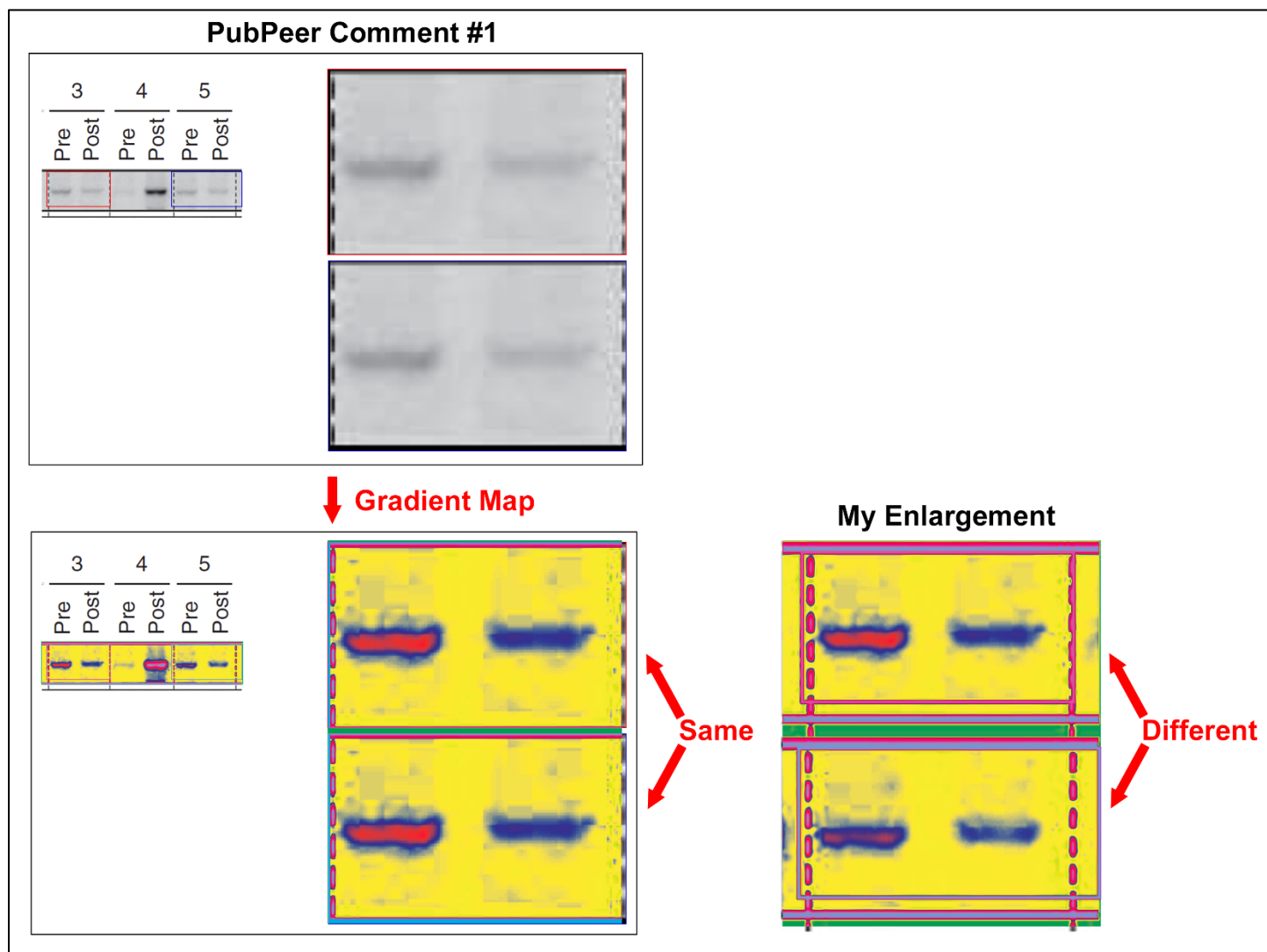


The illustration from PubPeer Comment #1 is shown at the top. At the bottom, I have applied a gradient map to the illustration. It is clear that the two lanes in the published p-eIF2 $\alpha$  image panel that were highlighted by the commenter in the red box are different. The first enlargement of those two lanes (at the center of the illustration) is a faithful reproduction of the published lanes, and the lanes are still clearly different. In the bigger enlargement at the bottom, however, the commenter has copied the left-hand lane and pasted it over the right-hand lane, and the two lanes are thus the same. The copy/paste is obvious, because the commenter also copied the dotted line, which is now present twice. It is present only once in the published image panel.



The illustration from PubPeer Comment #1 is shown at the top left. At the bottom left, I have applied a gradient map to the illustration. At the bottom right, I copied the region in question (in the red box drawn by the commenter) from the p-ERK and ERK image panels in the commenter's illustration, enlarged them, and applied the same gradient map.

In my enlargement, the two sets of bands are clearly different. In the enlargement done by the commenter, the bands from the top panel have been copied and pasted into the bottom panel, to make it appear that the bands in the top and bottom panels are duplicated.



The illustration from PubPeer Comment #1 is shown at the top left. At the bottom left, I have applied a gradient map to the illustration. At the bottom right, I copied the two regions in question (in the red and blue boxes drawn by the commenter) from the image panel at the left, enlarged them, applied the same gradient map, and arranged them in the same way that the commenter did.

In my enlargement, the two sets of bands are clearly different. In the enlargement done by the commenter, the bands from the top panel have been copied and pasted into the bottom panel, to make it appear that the bands in the top and bottom panels are duplicated.