

**From:** [REDACTED]  
**Sent:** Tuesday, April 14, 2020 5:51 AM  
**To:** [rtaich@umich.edu](mailto:rtaich@umich.edu)  
**Subject:** Cellular Signalling\_ concerns about your publication

**Publication:**

**Diverse signaling pathways through the SDF-1/CXCR4 chemokine axis in prostate cancer cell lines leads to altered patterns of cytokine secretion and angiogenesis**

[\[https://doi.org/10.1016/j.cellsig.2005.03.022\]](https://doi.org/10.1016/j.cellsig.2005.03.022)

**Cellular Signalling, Volume 17, December 2005, Pages 1578-1592**

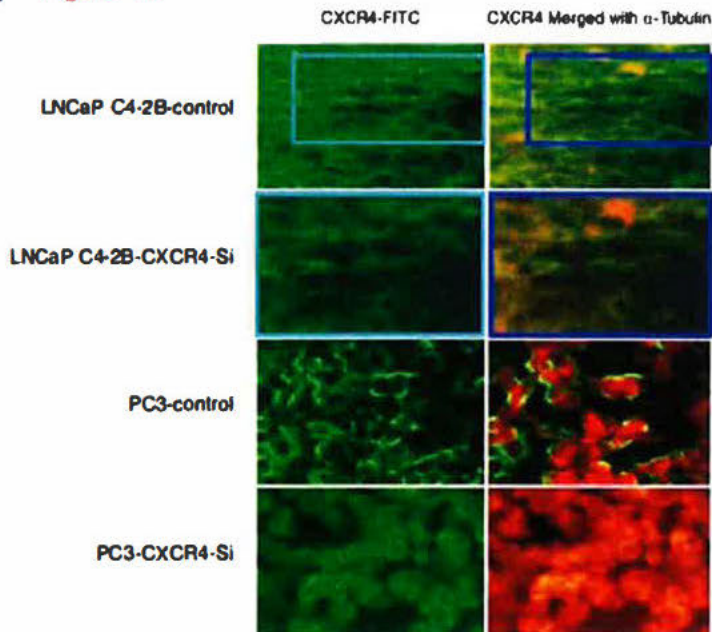
Dear Dr. Russell Taichman,

Concern has been raised about the publication of the article listed above, for which you are the corresponding author. As the publisher of the journal, I must take seriously any allegation raised that if true would violate the journal's policies.

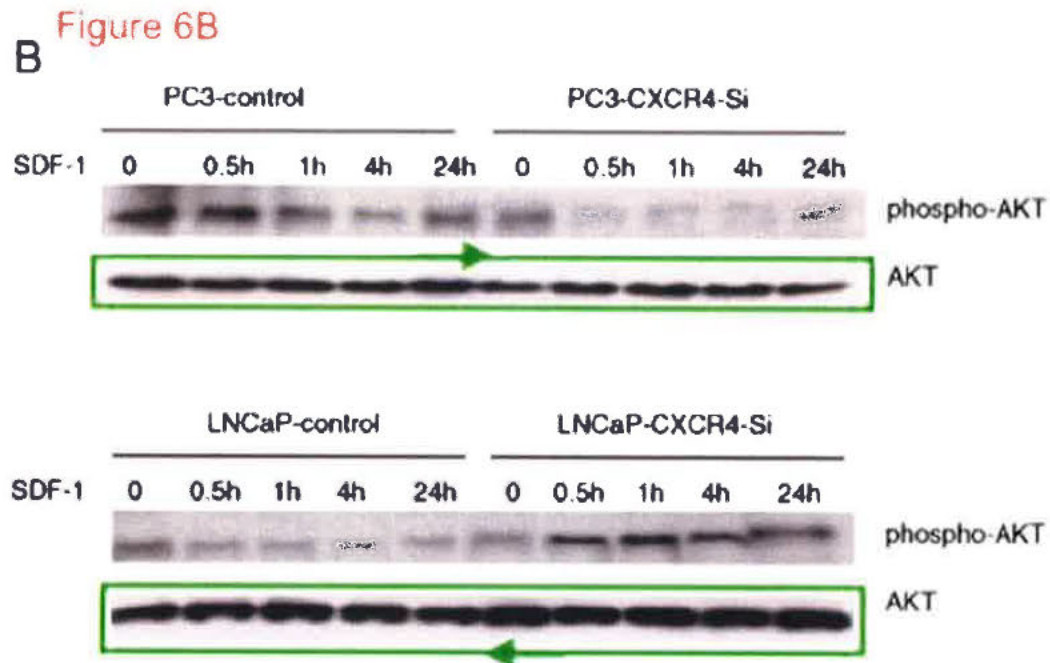
The substance of the complaint is image manipulation, which if true, would violate our publishing policies. Therefore, could you provide me with the raw uncut and unprocessed blots from figure 6A and 6B, and the original photos of figure 1B and reply to the allegations? Here is the list of concerns:

- Figure 1B. Blue boxes: the LNCaP C4 2B-control cell panels appear to show an area of overlap with the LNCaP C4 2B CXCR4-Si cell panels. Of note, zoom, aspect, and exposure factors are all different.

**B Figure 1B**



- Figure 6A: The ERK1/2 panels at 4h and 24h look very similar.
- Figure 6B: The top and middle AKT panel look very similar, if one of the two is rotated 180 degrees, stretched differently, and exposed longer.

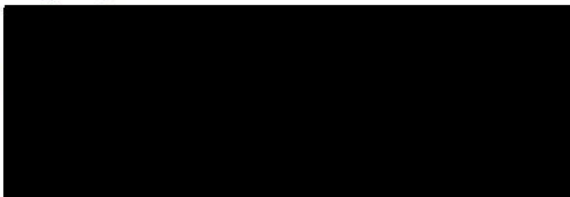


Please provide me a prompt and full response within 30 days, and then the Editor in Chief of the journal will evaluate your response. Depending on the nature of your response, I should also inform you that we may consider it necessary to inform and involve the research institution at which the underlying research took place, and possibly the funding agency that supported the research.

Please note that if we do not have an adequate and timely response, we may be forced to conclude that the allegations are truthful.

I look forward to hearing from you soon.

Regards,



**From:** Taichman, Russell S

**Sent:** Tuesday, April 14, 2020 7:19 AM

**To:** [REDACTED]

**Cc:** rtaich@umich.edu

**Subject:** FW: Cellular Signalling\_ concerns about your publication

Hello Jianhua

I recently relocated to Alabama.

Hope all is well. I received this below. I am not sure how to handle it but on the surface there looks as if there are issues which I did not know. Can you please help explain these or I am going to have little choice but to address this which could mean withdrawing the paper.

**Russell S. Taichman, DMD, DMSc | Dean**

**From:** [REDACTED]

**Sent:** Wednesday, April 15, 2020 9:06 PM

**To:** Taichman, Russell S <[taichman@uab.edu](mailto:taichman@uab.edu)>

**Subject:** Re:RE: Re:FW: Cellular Signalling\_ concerns about your publication

Hi, Rus,

I agree that this is a very serious charge.

I double check my copy of notebook kept in my office and found the raw data is limited. Most of data were kept in UM lab. I will answer the concerns point to point as shown below in bold black.

However, based on current situation of USA, the best way is that you make a final decision to withdraw the paper.

Sorry for bring this trouble to you AND I am also self-blamed.

Best Regards.

Jianhua

**From:** [REDACTED]

**Sent:** Thursday, June 4, 2020 9:07 AM

**To:** Taichman, Russell S <[taichman@uab.edu](mailto:taichman@uab.edu)>

**Subject:** RE: Re:RE: Re:RE: Re:FW: Cellular Signalling\_ concerns about your publication

Dear Dr. Taichman,

I hope you are well. I'd like to inform you that the Editor in Chief has evaluated your response, and decided not to investigate this case further. He would like to thank you for your cooperation so far.

Let me know if you have any question,

Regards,

[REDACTED]

---



**From:** Taichman, Russell S <taichman@uab.edu>

**Sent:** Wednesday, September 16, 2020 8:55 PM

**To:** [REDACTED]

**Subject:** RE: Re:RE: Re:RE: Re:FW: Cellular Signalling\_ concerns about your publication

Hello [REDACTED]

I have been mulling the issue you and your editorial team brought to me in April now for some time. I appreciate that the Editor In Chief has concluded their investigation into our work. Never the less, I would like to request retraction of the paper. Letting the record stand as incorrect, just does not sit right with me. I have corresponded with all of the authors, they have suggested multiple fixes but in the end, I am not in a position to repeat the experiments, and I am still not able to travel during the pandemic to obtain the primary data.

If the Editor is willing I would like to suggest the following language for a retraction or a version similar. I have two versions of a requested retraction, I seek your guidance. The first version places the blame squarely on Dr. Wang which he has admitted "I am also self-blamed" (see April 15, 2019 below) (language in red). The second version omits naming who is to blame.

Version 1:

The corresponding author of the paper Wang et al, Cellular Signalling, Volume 17, Pages 1578-1592, 2005 would like to retract the above paper as he has become aware that the some of the figures including Figure 1B, and Figure 6A were duplicated **by the first author**. The corresponding author wishes to convey sincere regret to the editor and readers of the journal of Cellular Signaling.

Version 2:

The corresponding author of the paper Wang et al, Cellular Signalling, Volume 17, Pages 1578-1592, 2005 would like to retract the above paper as he has become aware that the some of the figures including Figure 1B, and Figure 6A were duplicated. The corresponding author wishes to convey sincere regret to the editor and readers of the journal of Cellular Signaling.

Sincerely,  
Russ Taichman

**Russell S. Taichman, DMD, DMSc | Dean**

School of Dentistry

UAB | The University of Alabama at Birmingham

SDB #406 | 1720 2<sup>nd</sup> Avenue South | Birmingham, AL 35294-0007

P: 205.934.4720 | [taichman@uab.edu](mailto:taichman@uab.edu)

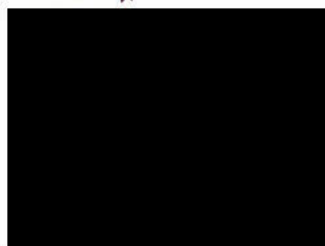
Executive Assistant, Ms. Tiffany Brooks P: 205.934-4720 | [twbrooks@uab.edu](mailto:twbrooks@uab.edu)

**From:** [REDACTED]  
**Sent:** Thursday, May 21, 2020 3:04 PM  
**To:** Taichman, Russell S <taichman@uab.edu>  
**Cc:** [REDACTED]  
**Subject:** Re: an article published in Cancer Research (2007)

Dear Dr. Taichman,

I hope all is well. A colleague has informed me they received a voicemail from you regarding an article published in *Cancer Research* in 2007. Can you provide some information regarding the issue with this article? While our physical offices are closed, the best way to reach me is via email.

Sincerely,



**AACR** American Association  
for Cancer Research  
FINDING CURES TOGETHER®

**From:** Taichman, Russell S  
**Sent:** Thursday, May 21, 2020 6:58 PM  
**To:** [REDACTED]  
**Cc:** [REDACTED]  
**Subject:** An article published in Cancer Research (2007)

Dear [REDACTED]

Thank you both for getting back to me. [REDACTED] got back to my email, [REDACTED] my telephone inquiry.

Here are the issues:

Last month I was contacted by Cell Signaling, a journal that I published in 2005 with Dr. Jianhua Wang (a former post-doc) as the first author (1), asking about a figure duplication. It has taken some time given all that is going on, but I have determined that there are some issues with that paper. There are issues with a Western blot (duplicate control images), and a duplicated IHC images.

At the suggestion of the group at Cell Signaling, I reached out to Dr. Wang to see what was going on and if he had copies of the original data (I moved to Alabama in July from Michigan, with the lab data still in Michigan). He does not, but stated "However, based on current situation of USA [the pandemic], the best way is that you make a final decision to withdraw the paper. Sorry for bring this trouble to you AND I am also self-blamed."

Taking a 10,000 foot view, I have slowly gone through all of the papers that Dr. Wang was a major contributor on, and I believe at least one other paper has an issue (Cancer Research) (2). I found an image in the Cell Signaling paper was replicated in the Caner Res paper. A second email exchange with Jianhua, asking specifically about the Cancer Research paper, was less enlightening.

At this point I reached out to you at Cancer Research (phone, email).

I also corresponded with my current employer and my former Dean at Michigan, who asked me to reach out to the Dean for Research at Univ Michigan School of Dentistry. I was guided to an site called Pubpeer, which further suggests there are further issues with the Cancer Research paper. PDFs of the PubPeer figures are attached for both papers.

I am intent on correcting the scientific record. I reached back to Cell Signaling over the weekend as to how they want me to proceed. I await their guidance. As indicated, all of the original data is in the lab at the Michigan. Critically, I don't think that it really makes a difference because once you see the issues, which I had a hard time spotting, it becomes clear what happened. Many of the images were duplicated and while I might not agree with all the issues, there are enough which are indisputable from my perspective. Further, this AM I reached out to one of my major collaborators [REDACTED] who published a paper with Dr. Wang independent of my involvement. Sadly, this issue with Dr. Wang was not unique to me, and apparently the issue was flagged some time ago.

Obviously, I am embarrassed and not clear how I missed these issues. I could use your guidance. I am happy to discuss this with you and supply any/all of the documents I have.



Again I am very sorry to have to relate this to you.

The papers in question are:



- JH Wang, J Wang, Y-X Sun, W Song, J Nor, CY Wang, and RS Taichman. Signaling through SDF-1/CXCR4 in prostate cancer cell lines leads to altered patterns of cytokine secretion & angiogenesis. Cellular Signaling. 2005. 17; 1578-1592. Pubmed #: 16005185
- J Wang, J Wang, J Dai, Y Jung, C-L Wei, Y Wang, A Havens, PJ Hogg, ET Keller, KJ Pienta, JE Nor, CY Wang, RS Taichman. A glycolytic mechanism regulating an angiogenic switch. Cancer research 2007 Jan 1;67(1):149-59. Pubmed #: 17210694

**Russell S. Taichman, DMD, DMSc | Dean**

## Diverse signaling pathways through the SDF-1/CXCR4 chemokine axis in prostate cancer cell lines leads to altered patterns of cytokine secretion and angiogenesis

Cellular Signalling (2005) - 5 Comments

doi: 10.1016/j.cellsig.2005.03.022 issn: 0898-6568 pubmed: 16005185

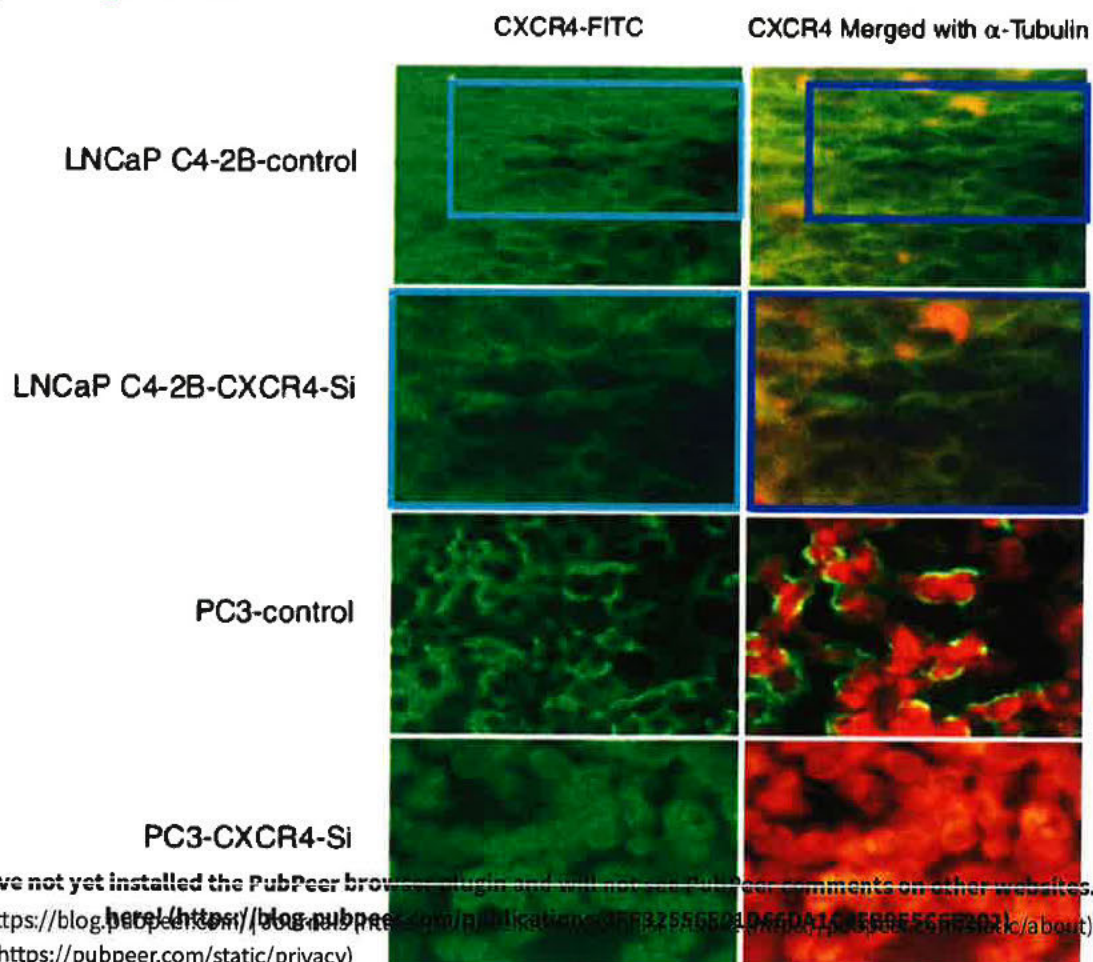
Jianhua Wang, Jincheng Wang, Yanxi Sun, Wenying Song, Jacques E. Nor, Cun Yu Wang , Russell S. Taichman 

#1  commented 2 months ago

Figure 1B. Could the authors please check?



- Blue boxes: The LNCaP C4-2B-control cell panels appear to show an area of overlap with the LNCaP C4-2B-CXCR4-Si cell panels. Of note, zoom, aspect, and exposure factors are all different.

### B Figure 1B



You have not yet installed the PubPeer browser plugin and will not see PubPeer comments on other websites. Install it [here!](https://blog.pubpeer.com/publications/07f92556684056da1c4e8955c6f3031) <https://blog.pubpeer.com/publications/07f92556684056da1c4e8955c6f3031>  
Blog (<https://blog.pubpeer.com/>) | <https://pubpeer.com/publications/07f92556684056da1c4e8955c6f3031> | Privacy Policy (<https://pubpeer.com/static/privacy>)

(https://pubpeer.com/storage/image-1585786014387.png)

 report  permalink (/publications/15BDB9EC8B2E38E8A42D012280864A#1)

Reply

#2  commented 2 months ago

Figure 6A.

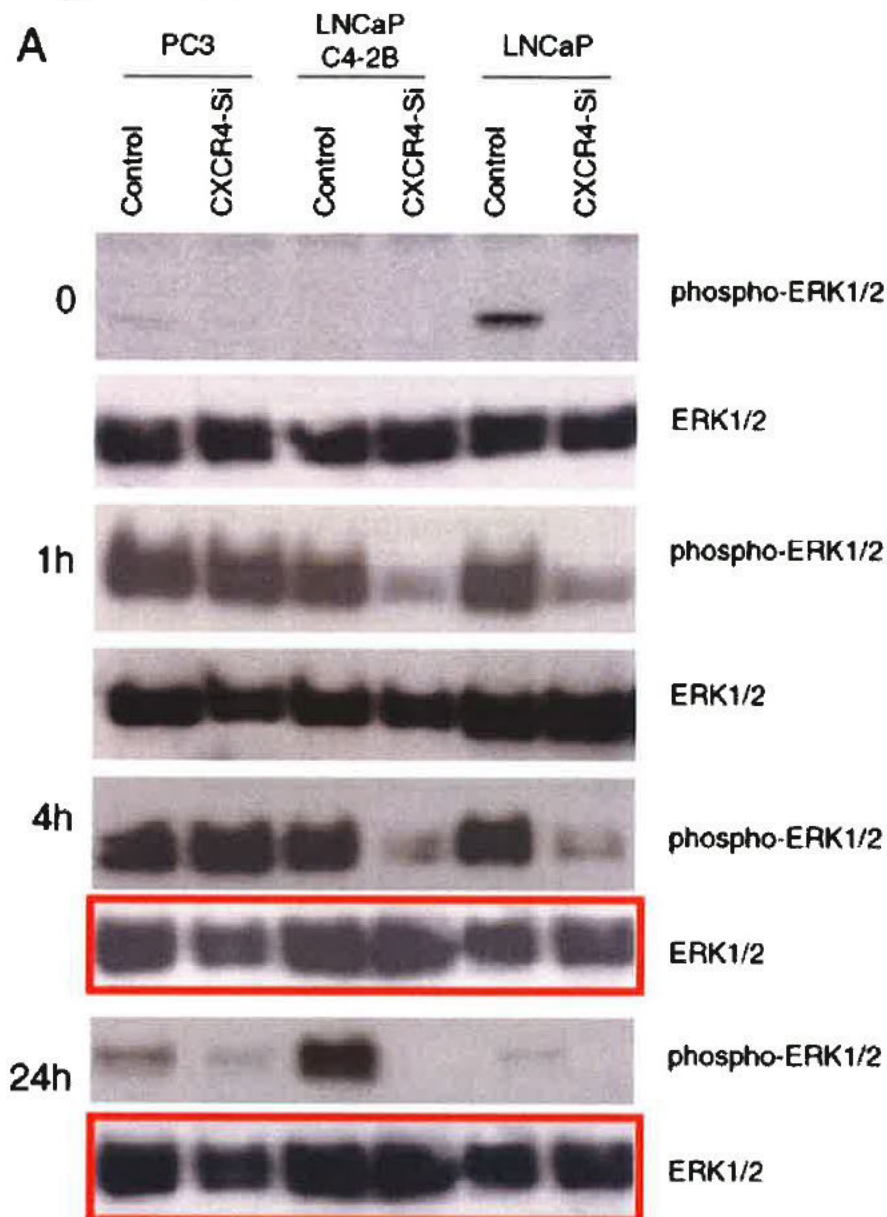
- Red boxes: The ERK1/2 panels at 4h and 24h look very similar.

**You have not yet installed the PubPeer browser plugin and will not see PubPeer comments on other websites. Install it here!** (https://blog.pubpeer.com/publications/3FE82556501D66DA1C45B955C6F202)

Blog (https://blog.pubpeer.com/) | Journals (https://pubpeer.com/journals) | About (https://pubpeer.com/static/about) | Privacy Policy (https://pubpeer.com/static/privacy)

© 2020 PubPeer Foundation (http://www.pubpeer.com/)

Figure 6A



(<https://pubpeer.com/storage/image-1585786268742.png>)

report [permalink \(/publications/15BDB9EC8B2E38E8A42D012280864A#2\)](/publications/15BDB9EC8B2E38E8A42D012280864A#2)

Reply

#3 [REDACTED] commented 2 months ago

You have not yet installed the PubPeer browser plugin and will not see PubPeer comments on other websites. Install it [here](#) (<https://blog.pubpeer.com/publications/3FE22F55E01D66DA1CAEB95566F202>)

Blog (<https://blog.pubpeer.com/publications/3FE22F55E01D66DA1CAEB95566F202>) | Privacy Policy (<https://pubpeer.com/static/privacy>)

© 2020 PubPeer Foundation (<http://www.pubpeer.com/>)

- B** Figure 6B



### Reply

You have not yet installed the Publisher Browser plugin and will not see Publisher comments on other websites. Install it: <https://bit.ly/3uBpC8m> or <https://bit.ly/3uBpC8m> (for Windows) or <https://bit.ly/3uBpC8m> (for Mac).

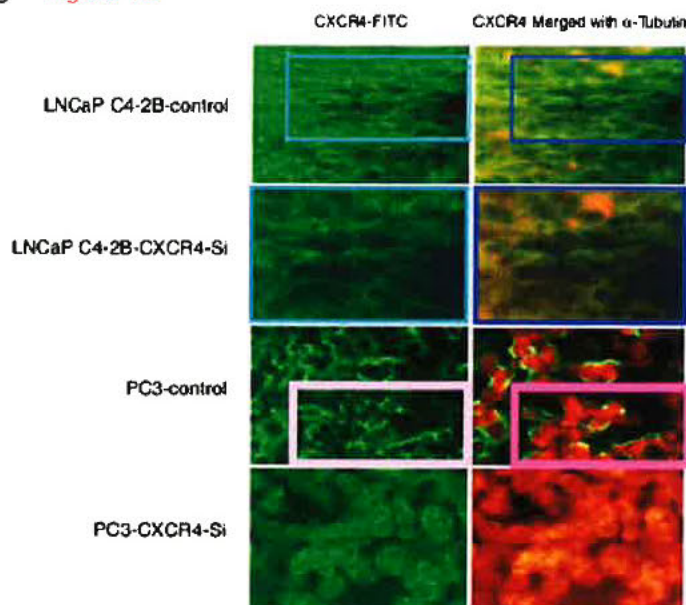


That newer paper is: Jianhua Wang et al., Cancer Research 2007, DOI: 10.1158/0008-5472.can-06-2971 See:  
<https://pubpeer.com/publications/F812B34F81256487E17917D064C584>  
 (https://pubpeer.com/publications/F812B34F81256487E17917D064C584)

Could the authors clarify if these are showing the same experiments? In the 2005 paper the green channel appears to represent CXCR4 expression, while in the 2007 paper it appears to show PGK1 expression. The cells appear different too, but maybe I am misunderstanding what is shown here.

Jianhua Wang et al., Cellular Signalling (2005),  
 DOI: 10.1016/j.cellsig.2005.03.022

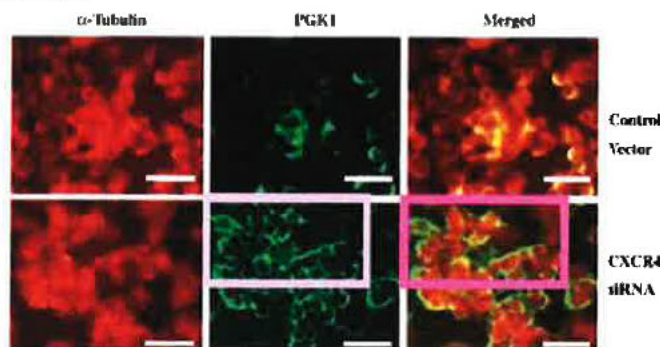
B Figure 1B



(https://pubpeer.com/storage/image-

Jianhua Wang et al., Cancer Research (2007),  
 DOI: 10.1158/0008-5472.can-06-2971

Figure 1B



1585795538099.png)

You have not yet installed the PubPeer browser plugin and will not see PubPeer comments on other websites. Install it:

Blog (<https://blog.pubpeer.com/publications/3FE825F56501D66DA1545B95566F202>) | Privacy Policy (<https://pubpeer.com/static/privacy>)

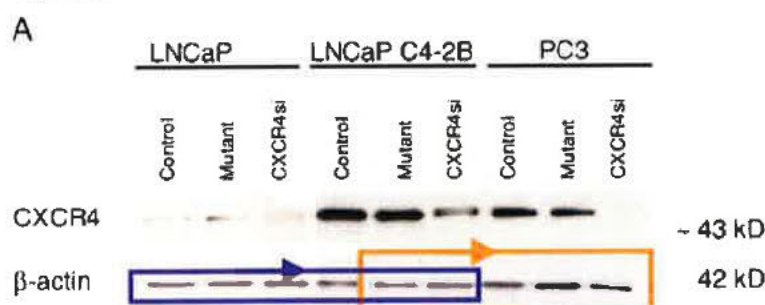
permalink (/publications/15DD88FC89252858A42D0A12290864A44) <https://www.pubpeer.com/>

#5 commented 2 months ago

The b-actin panel in Figure 1A of this older 2005 paper appears to show similarities to the a-Tubulin panels in Figure 1C and 1D of the 2007 paper, although in some occasions mirrored over a horizontal axis. Shown with orange and purple boxes. Note the presence and position of a little dot above one of the lanes.

1582  
Jianhua Wang et al., Cellular Signalling (2005),  
DOI: 10.1016/j.cellsig.2005.03.022  
J. Wang et al. / Cellular S

Figure 1A



Jianhua Wang et al., Cancer Research 2007,  
DOI: 10.1158/0008-5472.can-06-2971

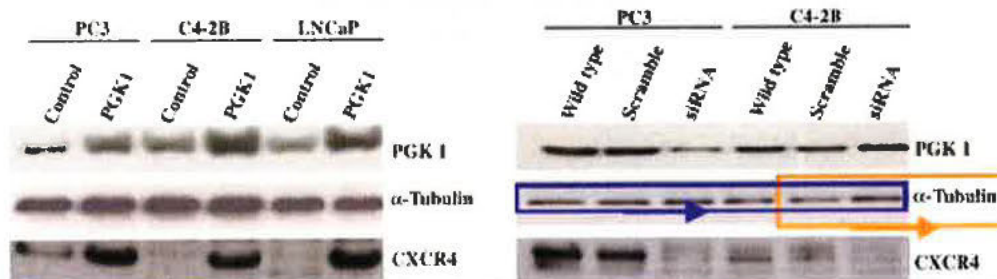
Figure 1C



Figure 1D

Jianhua Wang et al., Cancer Research 2007,  
DOI: 10.1158/0008-5472.can-06-2971

**D**





You have not yet installed the PubPeer browser plugin and will not see PubPeer comments on other websites. Install it!

Blog (<https://blog.pubpeer.com/>) | Publications (<https://pubpeer.com/publications/>) | About (<https://pubpeer.com/about/>) | Privacy

Policy (<https://pubpeer.com/static/privacy>)

© 2020 PubPeer Foundation (<http://www.pubpeer.com/>)

 report  permalink (/publications/15BDB9EC8B2E38E8A42D012280864A#5)

Reply


**Write** **Preview**

$x^2$    **B** *I*

Leave a comment

Attach files by dragging & dropping, selecting them, or pasting from the clipboard.

Comment must be at least 15 characters.

 Styling with Markdown is supported (<http://pubpeer.com/static/markdown>)

Comment as **Russell S. Taichman**

 Go to article (<http://dx.doi.org/10.1016/j.cellsig.2005.03.022>)

 Get alerts for new activity

 Authors emails

---

**You have not yet installed the PubPeer browser plugin and will not see PubPeer comments on other websites. Install it**

**here!** (<https://blog.pubpeer.com/publications/3FF32F56504D66DA1CA5B9E566F2021>)  
Blog (<https://blog.pubpeer.com/>) | <https://pubpeer.com/static/about> | Privacy Policy (<https://pubpeer.com/static/privacy>)

© 2020 PubPeer Foundation (<http://www.pubpeer.com/>)



[Home \(/\)](#) / [Publications \(/recent\)](#)


## A glycolytic mechanism regulating an angiogenic switch in prostate cancer

Cancer Research (2007) - 4 Comments

pubmed: 17210694 doi: 10.1158/0008-5472.can-06-2971 issn: 0008-5472 issn: 1538-7445

Jianhua Wang, Jincheng Wang, Jinlu Dai, Younghun Jung, Chuen-Long Wei, Yu Wang, Aaron M. Havens, Phillip J. Hogg, Evan T. Keller, Kenneth J. Pienta, Jacques E. Nor, Cun-Yu Wang , Russell S. Taichman 

Department of Periodontics and Oral Medicine, University of Michigan School of Dentistry, 1011 North...

#1  commented 2 months ago

The CXCR4-siRNA panels in Figure 1B of this 2007 paper appear to look similar to PC3-control cells in Figure 1B of an older paper by the same research group (same first author). Shown with boxes in two shades of pink.

That older paper is: Jianhua Wang et al., Cellular Signalling (2005), DOI: 10.1016/j.cellsig.2005.03.022 See:

<https://pubpeer.com/publications/15BDB9EC8B2E38E8A42D012280864A>

(<https://pubpeer.com/publications/15BDB9EC8B2E38E8A42D012280864A>)

Could the authors clarify if these are showing the same experiments? In the 2005 paper the green channel appears to represent CXCR4 expression, while in the 2007 paper it appears to show PGK1 expression. The cells appear different too, but maybe I am misunderstanding what is shown here.

**You have not yet installed the PubPeer browser plugin and will not see PubPeer comments on other websites. Install it here!** ✕

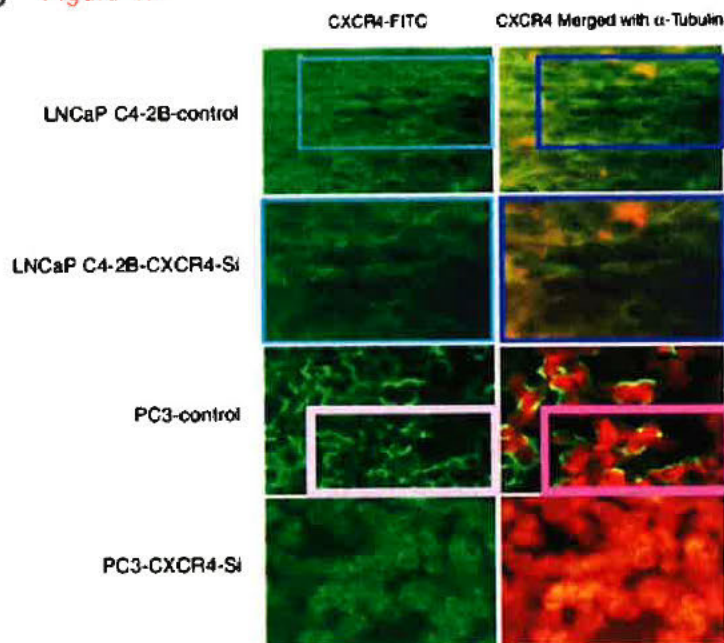
Blog (<https://blog.pubpeer.com/>) | Journals (<https://pubpeer.com/journals>) | About (<https://pubpeer.com/static/about>) | Privacy Policy (<https://pubpeer.com/static/privacy>)

© 2020 PubPeer Foundation (<http://www.pubpeer.com/>)



Jianhua Wang et al., Cellular Signalling (2005),  
DOI: 10.1016/j.cellsig.2005.03.022

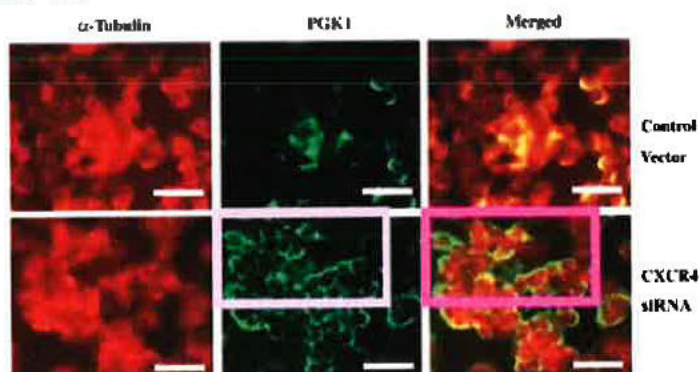
## B Figure 1B



([https://pubpeer.com/storage/image-](https://pubpeer.com/storage/image-1585795538099.png)

Jianhua Wang et al., Cancer Research (2007),  
DOI: 10.1158/0008-5472.can-06-2971

## Figure 1B



1585795538099.png)

report

permalink (/publications/F812B34F81256487E17917D064C584#1)

Reply

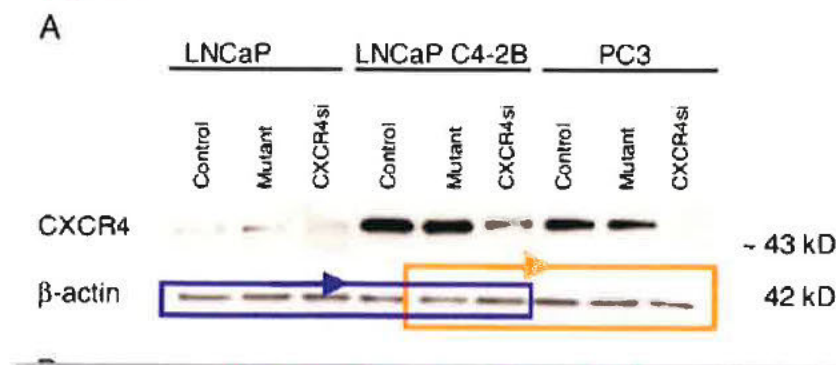
#2 commented 2 months ago

**You have not yet installed the PubPeer browser plugin and will not see PubPeer comments on other websites. Install it here!**

The β-actin panel in Figure 1A of the older 2005 paper appears to show similarities to the α-Tubulin panels in Figure 1C and 1D of this 2007 paper although in some occasions mirrored over a horizontal axis. Shown with orange and purple boxes. Note the presence and position of a little dot above one of the lanes.

1582

Figure 1A

Jianhua Wang et al., *Cancer Research* 2007,

DOI: 10.1158/0008-5472.can-06-2971

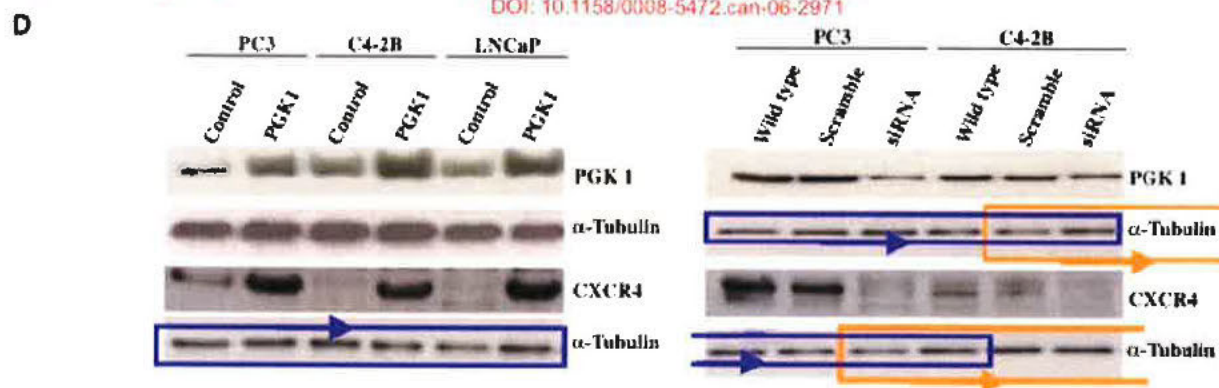
Figure 1C



Figure 1D

Jianhua Wang et al., *Cancer Research* 2007,

DOI: 10.1158/0008-5472.can-06-2971



(https://pubpeer.com/storage/image-1585798032026.png)

report

permalink (/publications/F812B34F81256487E17917D064C584#2)

Reply

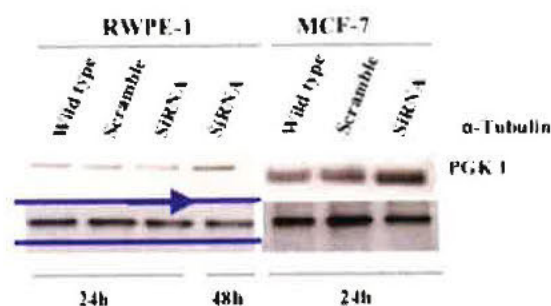
#3 commented 2 months ago

**You have not yet installed the PubPeer browser plugin and will not see PubPeer comments on other websites. Install it here!** X

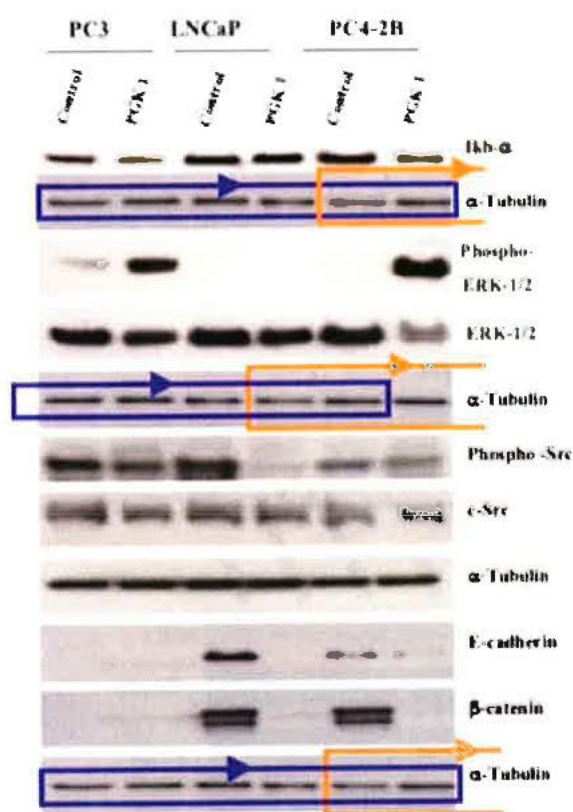
The same **Actin/Tubulin** blot appears to be visible in Supplemental Figures 2C and 3A. Comparing of this remarkable versatile blot in more figures are not ruled out.

© 2020 PubPeer Foundation (<http://www.pubpeer.com/>)

## C. Supplemental Figure 2C



## A. Supplemental Figure 3A



([https://pubpeer.com/storage/image-](https://pubpeer.com/storage/image-1585798774097.png)

1585798774097.png)

report

permalink (/publications/F812B34F81256487E17917D064C584#3)

Reply

#4 [redacted] commented 2 months ago

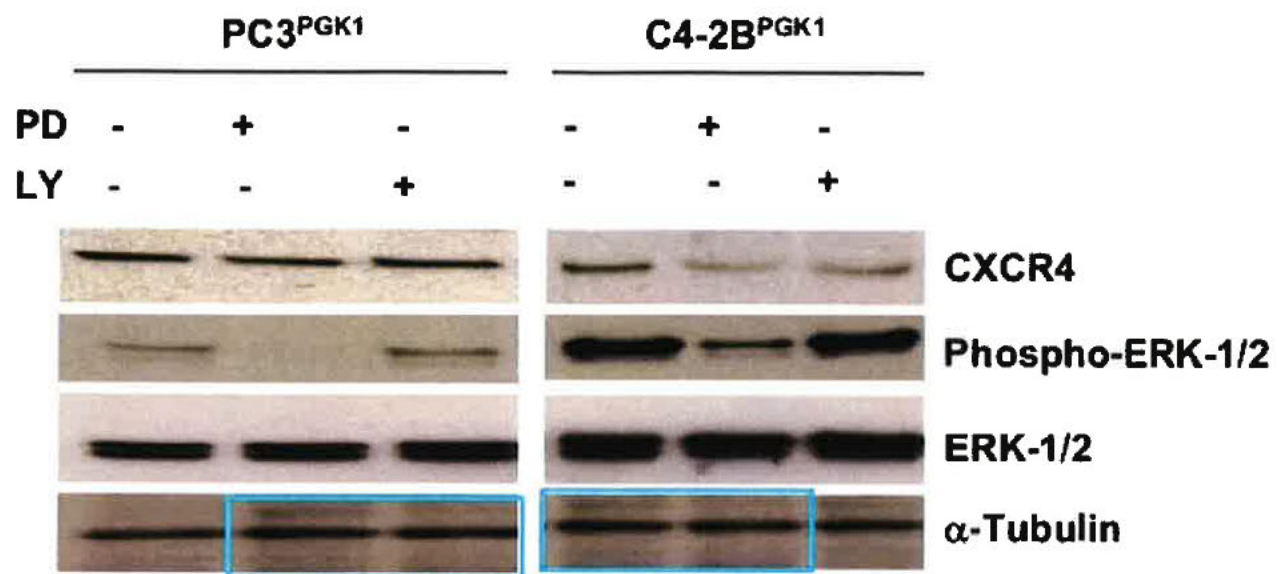
**You have not yet installed the PubPeer browser plugin and will not see PubPeer comments on other websites. Install it here!**

Figure 3B, lanes 1, 2 in the left Tubulin panel look similar to lanes 1, 2 in the right Tubulin panel. Shown with aqua boxes. <https://pubpeer.com/publications/F812B34F81256487E17917D064C584>

© 2020 PubPeer Foundation (<http://www.pubpeer.com/>)



## B. Supplemental Figure 3B



(<https://pubpeer.com/storage/image-1585801443644.png>)

 report

permalink (/publications/F812B34F81256487E17917D064C584#4)

Reply

Write


Preview

x<sup>2</sup>   B I

Leave a comment

Attach files by dragging & dropping, selecting them, or pasting from the clipboard.

Comment must be at least 15 characters.

 Styling with Markdown is supported (<http://pubpeer.com/static/markdown>)

**You have not yet installed the PubPeer browser plugin and will not see PubPeer comments on other websites. Install it here!** 

Blog (<https://blog.pubpeer.com/>) | Journals (<https://pubpeer.com/journals/>) | About (<https://pubpeer.com/static/about/>) | Privacy Policy (<https://pubpeer.com/static/privacy-policy/>) | <https://chrome.google.com/webstore/detail/pubpeer/fmcdfigcdfkdgbdklhlbbpacikcchbbh>)  
 10.1158/0008-5472.can-06-2971

© 2020 PubPeer Foundation (<http://www.pubpeer.com/>)

 Get alerts for new activity

 Authors emails

---

**You have not yet installed the PubPeer browser plugin and will not see PubPeer comments on other websites. Install it here!** 

**(<https://chrome.google.com/webstore/detail/pubpeer/fmcdfigcdfkdgbdklblbbnacicccchbbh>)**  
Blog (<https://blog.pubpeer.com/>) | Journals (<https://pubpeer.com/journals/>) | About (<https://pubpeer.com/static/about/>) | Privacy  
Policy (<https://pubpeer.com/static/privacy>)

© 2020 PubPeer Foundation (<http://www.pubpeer.com/>)



**From:** [REDACTED]

**Sent:** Sunday, January 31, 2021 12:01 PM

**To:** Taichman, Russell S <[taichman@uab.edu](mailto:taichman@uab.edu)>

**Cc:** [REDACTED]

**Subject:** RE: An article published in Cancer Research (2007), CAN-06-2971

Dear Dr. Taichman

Please see the drafted retraction notice and let me know if you have any questions or concerns. I will send this to all co-authors by Wednesday, February 3<sup>rd</sup>. As previously mentioned, we give co-authors a week to respond and will then schedule this note in the next available issue.

Sincerely,

[REDACTED]

**AACR**

American Association  
for Cancer Research

FINDING CURES TOGETHER™

**Retraction: Characterization of Phosphoglycerate Kinase-1 Expression of Stromal Cells Derived from Tumor Microenvironment in Prostate Cancer Progression**

Jianhua Wang, Gigi Ying, Jingchen Wang, Younghun Jung, Jian Lu, Jiang Zhu, Kenneth J. Pienta, and Russell S. Taichman

This article (1) has been retracted at the request of the authors. In Figure 2A, a portion of the image showing  $\alpha$ -SMA expression in CAFs was also used in Figure 4A showing  $\alpha$ -SMA expression in CAF<sup>Control</sup>. Additionally, in Figure 6B, portions of the p-p44/p42 Western blot were spliced together from separate blots, and lanes 3-4 were duplicated with lanes 5-6 in the p-AKT (473) Western blot. The authors apologize to the scientific community and deeply regret any inconveniences or challenges resulting from the publication and subsequent retraction of this article.

A copy of this Retraction Notice was sent to the last known email addresses for 6 of the 6 authors. X authors ( ) agreed to the retraction; X authors ( ) did not agree to the retraction; X authors ( ) did not respond.

**Reference**

- 1) Wang J, Ying G, Wang J, Jung Y, Lu J, Zhu J, et al. Characterization of Phosphoglycerate Kinase-1 expression of stromal cells derived from tumor microenvironment in prostate cancer progression. *Cancer Res.* 2010;**70**:471-80.

**Retraction: CXCR6 Induces Prostate Cancer Progression by the AKT/Mammalian Target of Rapamycin Signaling Pathway**

Jianhua Wang, Yi Lu, Jingchen Wang, Alisa E. Koch, Jian Zhang, and Russell S. Taichman

This article (1) has been retracted at the request of the authors. In Figure 3C, the image depicting endothelial control (EC) was also used in Figure 4C of a separate 2008 paper by the authors (2). Additionally, in Figure 6A, the alpha-tubulin bands shown in lanes 3-5 for the PC3 cells were also used in lanes 1-3 for the C4-2B cells. The authors apologize to the scientific community and deeply regret any inconveniences or challenges resulting from the publication and subsequent retraction of this article.

A copy of this Retraction Notice was sent to the last known email addresses for 6 of the 6 authors. X authors ( ) agreed to the retraction; X authors ( ) did not agree to the retraction; X authors ( ) did not respond.

**References**

- 1) Wang J, Lu Y, Wang J, Koch AE, Zhang J, Taichman RS. CXCR6 induces prostate cancer progression by the AKT/Mammalian Target of Rapamycin signaling pathway. *Cancer Res.* 2008;**68**:10367-77.
- 2) Wang J, Shiozawa Y, Wang J, Wang Y, Jung Y, Pienta K, et al. The role of CXCR7/RDC1 as a chemokine receptor for CXCL12/SDF-1 in prostate cancer. *J Biol Chem.* 2008;**283**:4283-94.

**From:** Taichman, Russell S <[taichman@uab.edu](mailto:taichman@uab.edu)>

**Sent:** Monday, September 27, 2021 8:44 PM

**To:** [REDACTED]

**Cc:** Taichman, Russell S <[taichman@uab.edu](mailto:taichman@uab.edu)>

**Subject:** Publication Issues

Hello.

I have been alerted to several problems with data in one of my publications.

The publication is: Wang, J., Shiozawa, Y., Wang, J., Wang, Y., Jung, Y., Pienta, K., Mehra, R., LobergR. & Taichman, R. S. (2008). The role of CXCR7/RDC1 as a chemokine receptor for CXCL12/SDF-1 in prostate cancer. *J Biol Chemistry* 283(7): 4283-4294.  
doi:10.1074/jbc.M707465200.

As it turns out Dr. Jianhua Wang (1<sup>st</sup> author), who was a post-doc in my laboratory when I was at U. Michigan in the early 2000s, duplicated several pieces of the data.

Specifically:

1. In figure 5C, the he reused a portion of the microscopy and relabeled it to represent C4-2BOEControl, C4-2BCXCR7, and C4-2BsiControl
2. He reused of the same image for the endothelial control (EC) in Figure 3C of Wang et al. *Cancer Research* (2008) and EC control in Figure 4C of Wang et al. (2008) *Cancer Research* (Wang, J., Lu, Y., Wang, J., Koch, A., Zhang, J. & Taichman, R. S. (2008). CXCR6 induces prostate cancer progression by the AKT/mammalian target of rapamycin signaling pathway. *Cancer Research* 68(24): 10367-10376. doi:10.1158/0008-5472.CAN-08-2780.)

Clearly I am embarrassed. But I am committed to doing the right thing.

I have been in contact with all the other authors except Jianhua Wang.

Please advise on how to proceed.

Again I am very sorry

**Russell S. Taichman, DMD, DMSc | Dean**

From: [REDACTED]  
Sent: Monday, June 6, 2022 5:06 PM  
To: Taichman, Russell S <taichman@uab.edu>; [REDACTED]  
Cc: [REDACTED]  
[REDACTED]

Subject: Re: JBC (2008) 283(7) 4283-4294 image analysis

RE: JBC (2008) 283(7) 4283-4294  
DOI: [10.1074/jbc.M707465200](https://doi.org/10.1074/jbc.M707465200)

Dear Dr. Taichman and co-authors,

This is to confirm we have received your proof that you ALL agreed with the withdrawal notice.

We will proceed with the withdrawal of your article and with the updated withdrawal notice below:

***"This article has been withdrawn by the authors to correct the scientific record, except for Jianhua Wang who could not be contacted. The journal analysis and the authors conclude that in Figure 5, the C4-2B CXCR7 panel has been rotated and reused as the C4-2B siControl panel. Due to primary data for C4-2B siControl panel not supporting the original conclusions, the authors wish to withdraw this article."***

No further action is required on your part.

Thank you for bringing this to our attention.

Sincerely,

[REDACTED]

American Society for Biochemistry and Molecular Biology



