

Response to
Doctor Tim Skern
Editor in-chief
Archives of Virology

Dear Sir, based on your statement in an e-mail *“I agree that the images are **identical**”* I would like to thank you for the opportunity to leave my explanation. Despite of your comment *“As we have recently retracted two of your articles in Archives of Virology, I require a satisfactory explanation from you why these two images are **identical**, otherwise this paper will also be retracted. You have four weeks to present an explanation”* I have to inform you Sir that both figures are not **identical**. I am sorry to be disappointed. First they have 10 years of difference, must have a look at definition and colour. Moreover, I do not have the original image anymore. Second, the computational analysis was used and the respective results are described by a specialist.

By definition identical is “similar in every detail; exactly alike; not able to be identified as different or distinct; remaining the same in all cases and at all times; unchanging in form or character. In order to provide a technical answer to “**identical**” image it was used software to resemble and similarity with accuracy (98%), specificity (92%) and precision (90%) by a specialist.

In brief, 2018 ARV published paper and VETMIC 2019 retracted my two articles, point out my personal mistake during review process to mismatched the Fig 1A and promptly communicate the VETMIC journal in 2019. Despite of this involuntary error the retraction was maintained with my personal agreement. It is important that authors agree with the retraction.

Picture retracted from VETMIC 2019 copyrights belongs to ARV 2018. They are **identical by definition** : similar in every detail; exactly alike; not able to be identified as different or distinct; remaining the same in all cases and at all times; unchanging in form or character.

A

CONTROL

T.C. Cardoso et al.

24 h

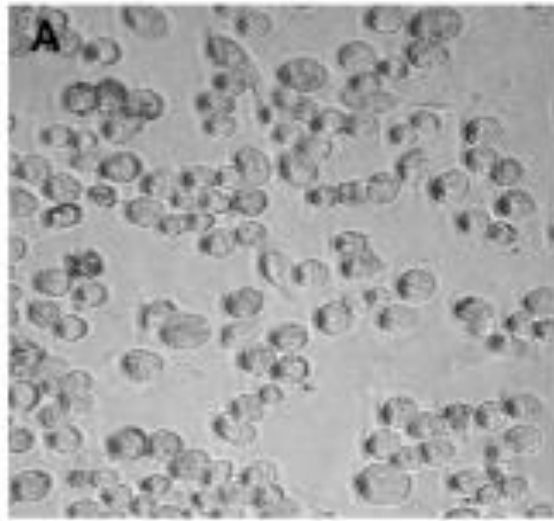
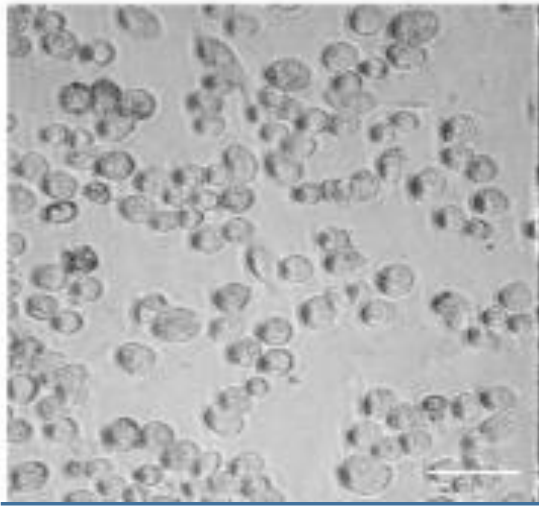


Figure copyrights ANAEROBE 2013 (did not recognize the retraction) retracted by ARV 2015. They are not **identical following definition**: similar in every detail; exactly alike; not able to be identified as different or distinct; remaining the same in all cases and at all times; unchanging in form or character.

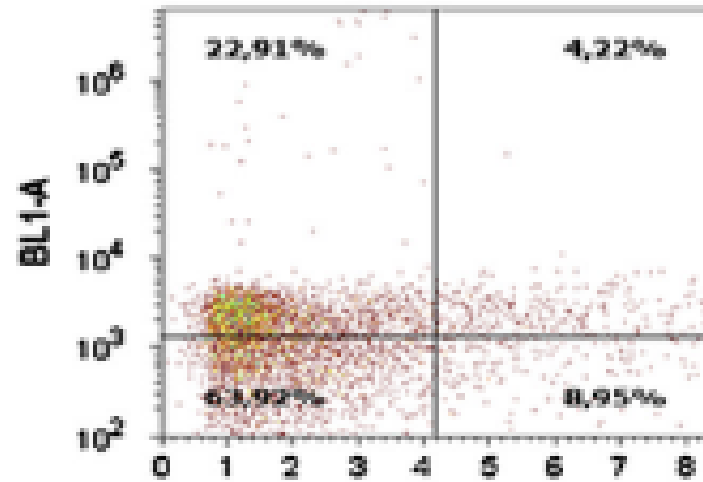
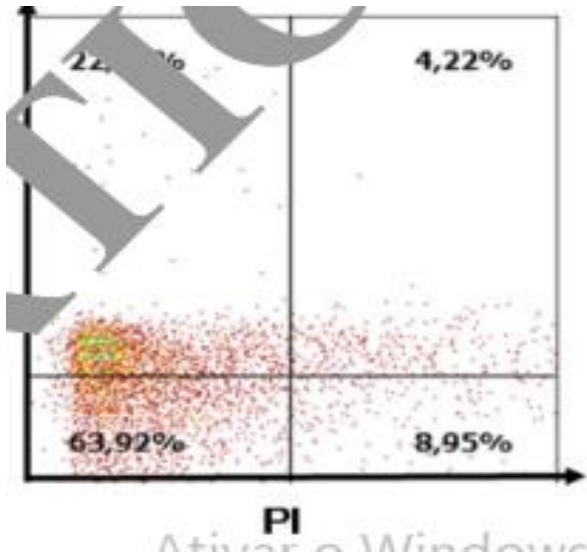


Fig. 1, lower right panel
Archives of Virology 2021

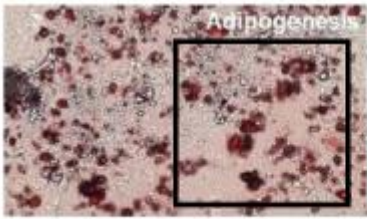
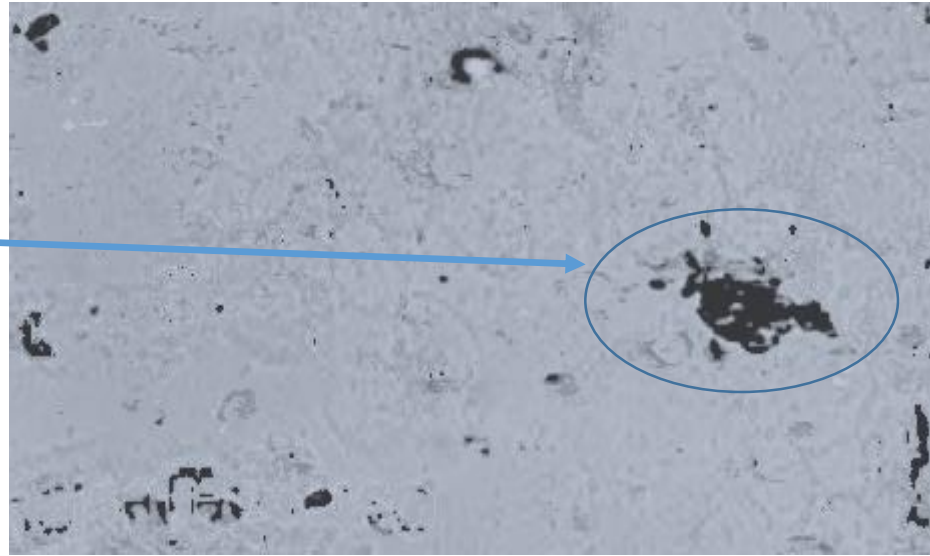
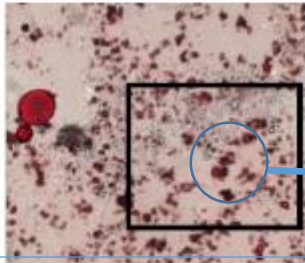
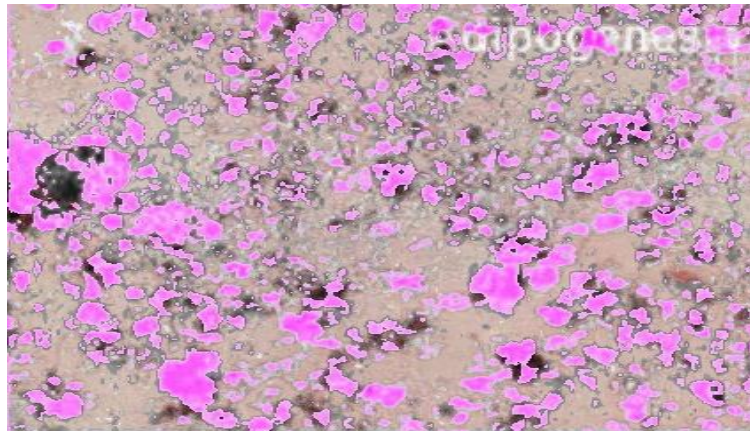


Fig. 4C,
BMC Biotechnology 2012

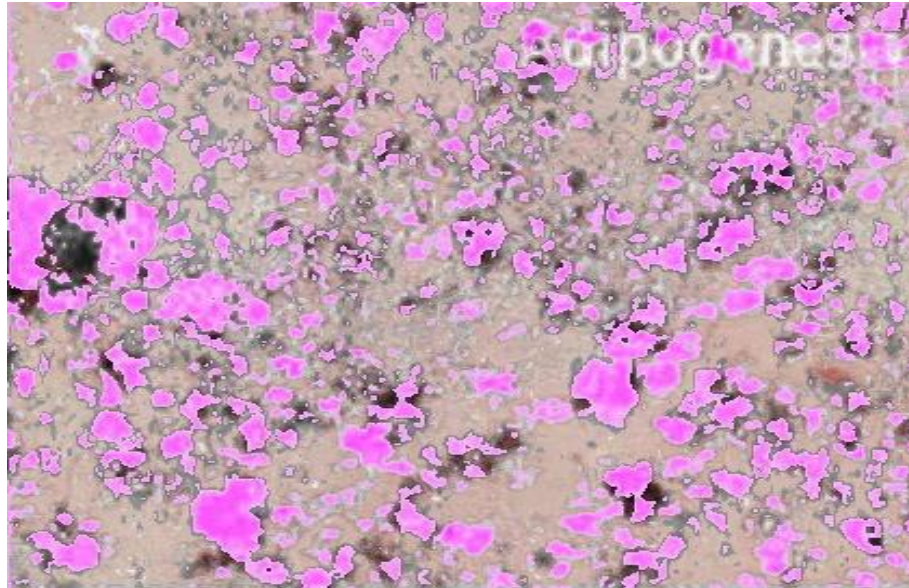


Overlapping both selected squares = 10.45% similar dark colour

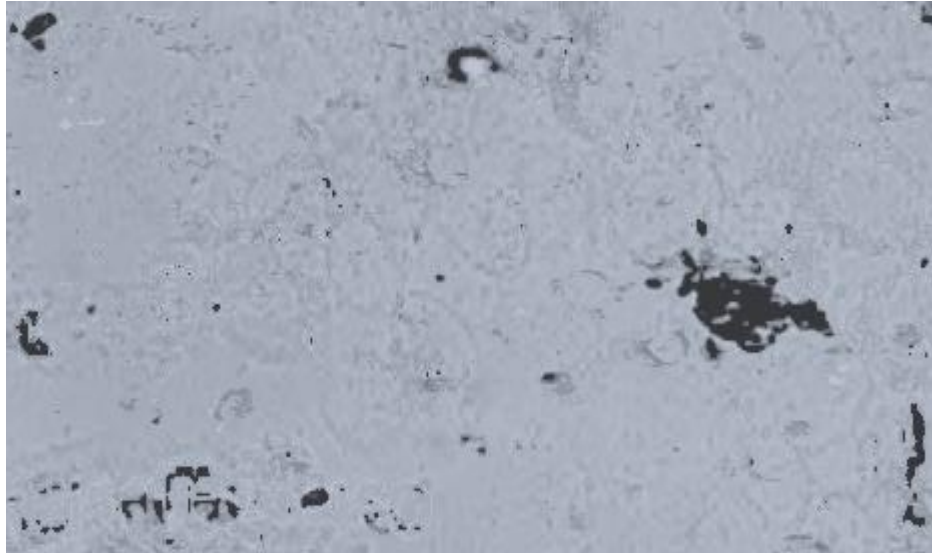


Overlapping both pictures = 73.98% not match all pink considered different.

Figure from BMC 2012 copyright belongs to Cardoso et al. and Figure ARV 2022. They are not **identical following**: similar in every detail; exactly alike; not able to be identified as different or distinct; remaining the same in all cases and at all times; unchanging in form or character. Figure taken by Zoom, colour points were considered not similar (accuracy, size, morphology and specificity in comparison to BMC (overlapping pictures)).



Area selected and supposed to be **identical** however they are **not** similar in every detail; exactly alike; not able to be identified as different or distinct; remaining the same in all cases and at all times; unchanging in form or character showed 10.45% of similarity between two images. Dark considered similar.



In conclusion, certain that you Sir are going to retract the article based on your conviction of identity I have to disagree. However, all authors would like to ask that our position, if possible, could be expressed at your retraction note. *“The authors do not agree that these figures are **identical** based on computational analysis”.* The authors agreement is very important.

Best wishes
Tereza C Cardoso