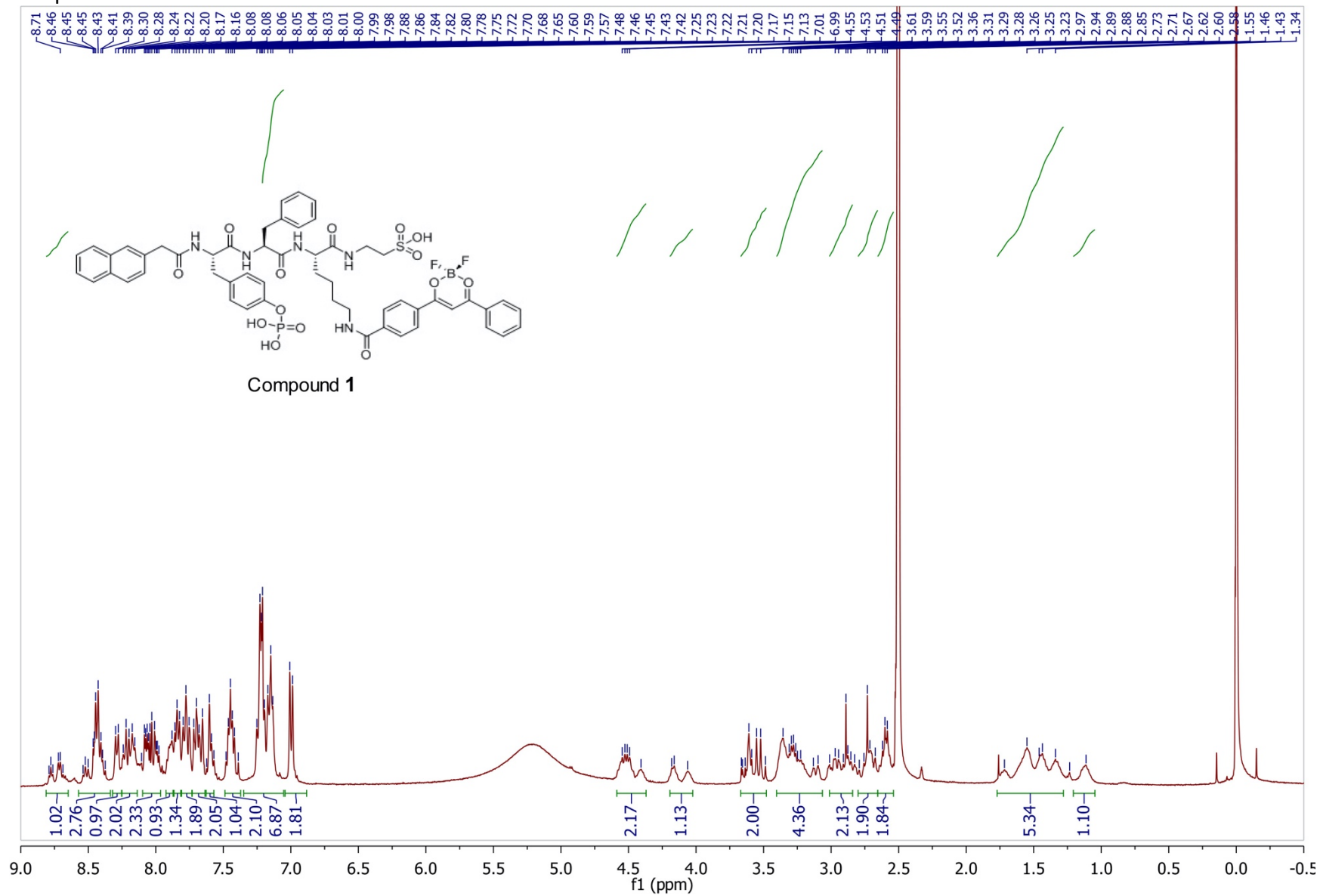
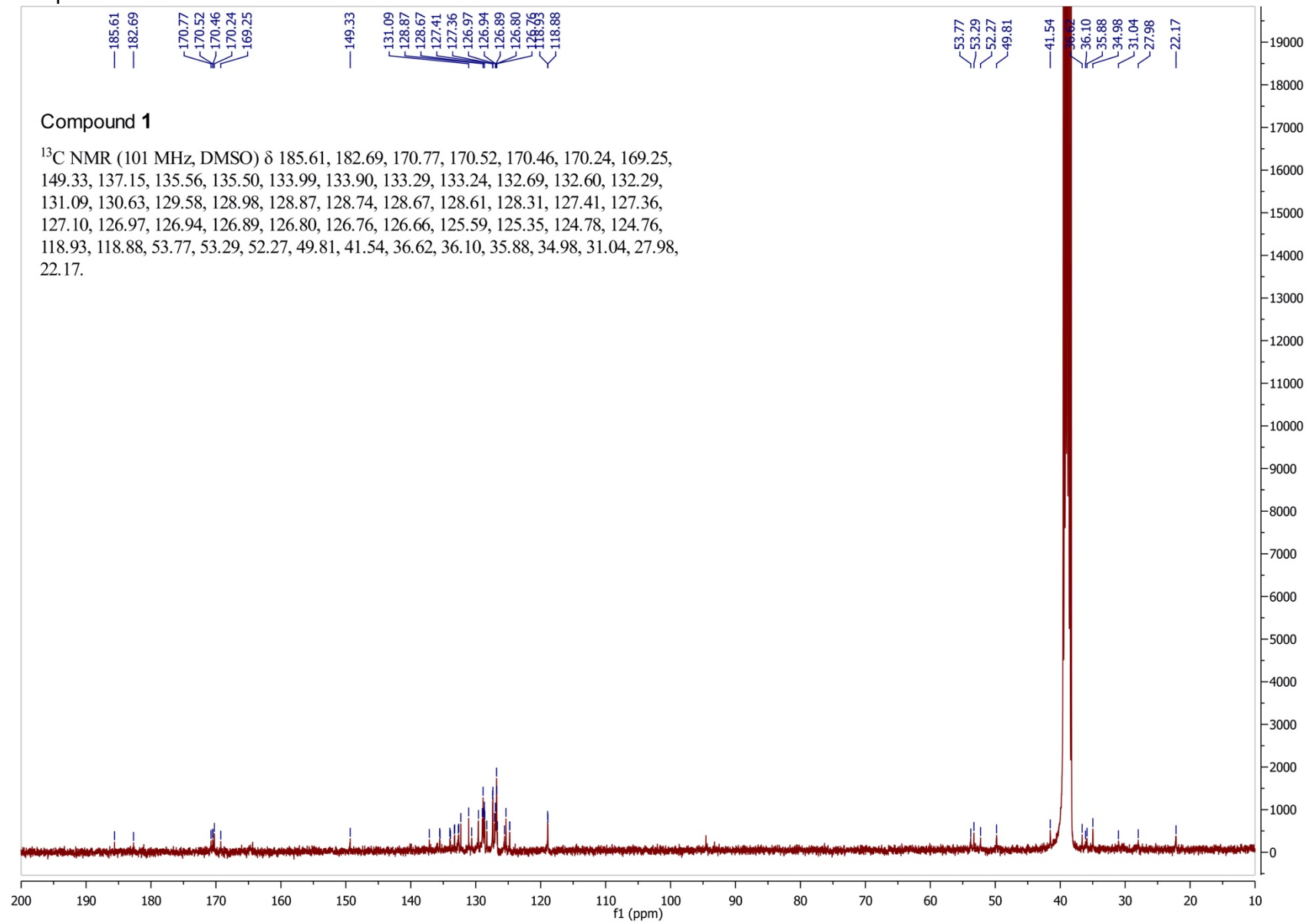


# Compound 1



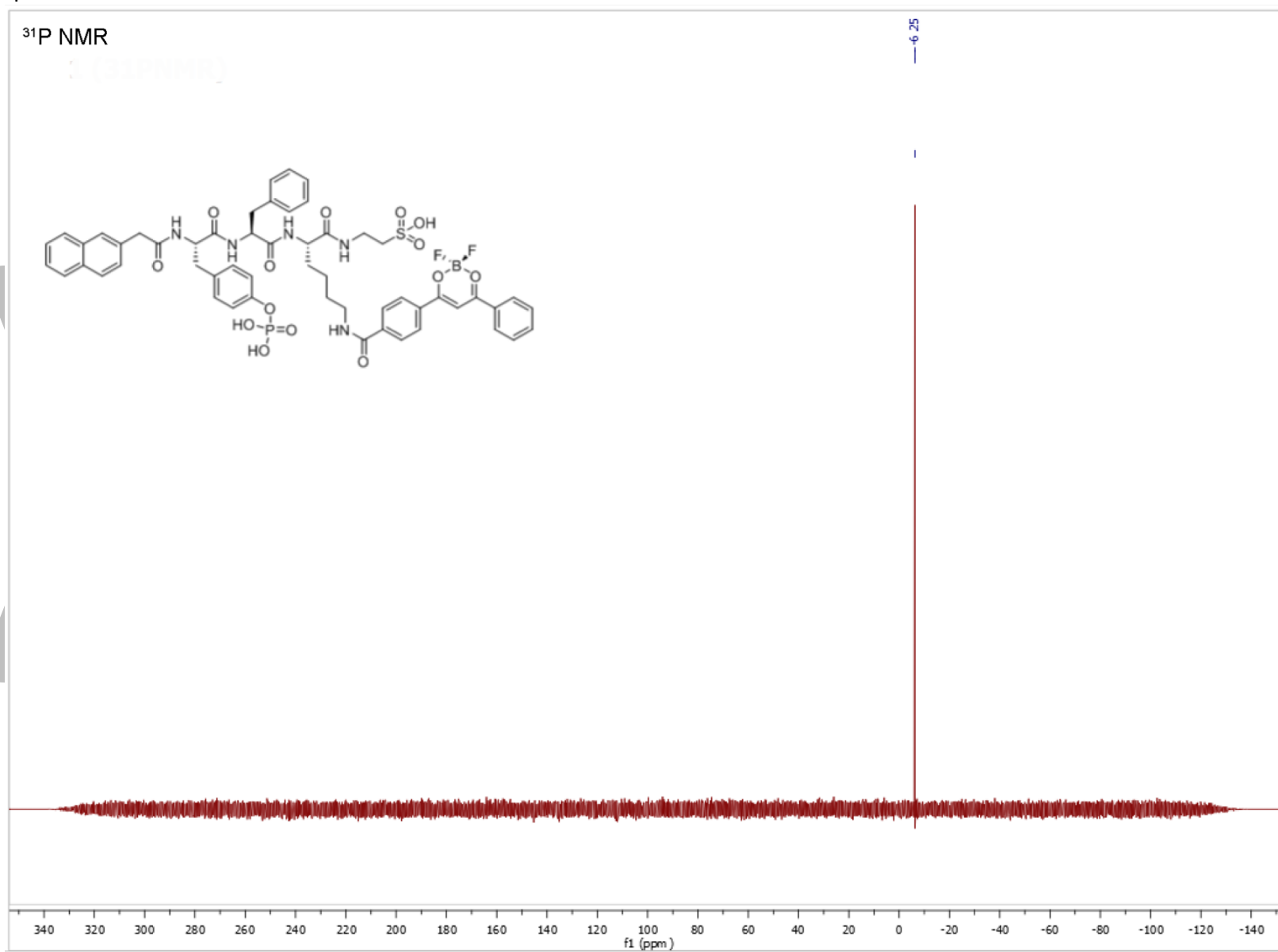
# Compound 1



# Compound 1

$^{31}\text{P}$  NMR

1 (31PNMR)



HPLC

**Instrument:** Agilent 1220

**Column:** 2.1 mm x 150 mm (130 Å) Xbridge C-18

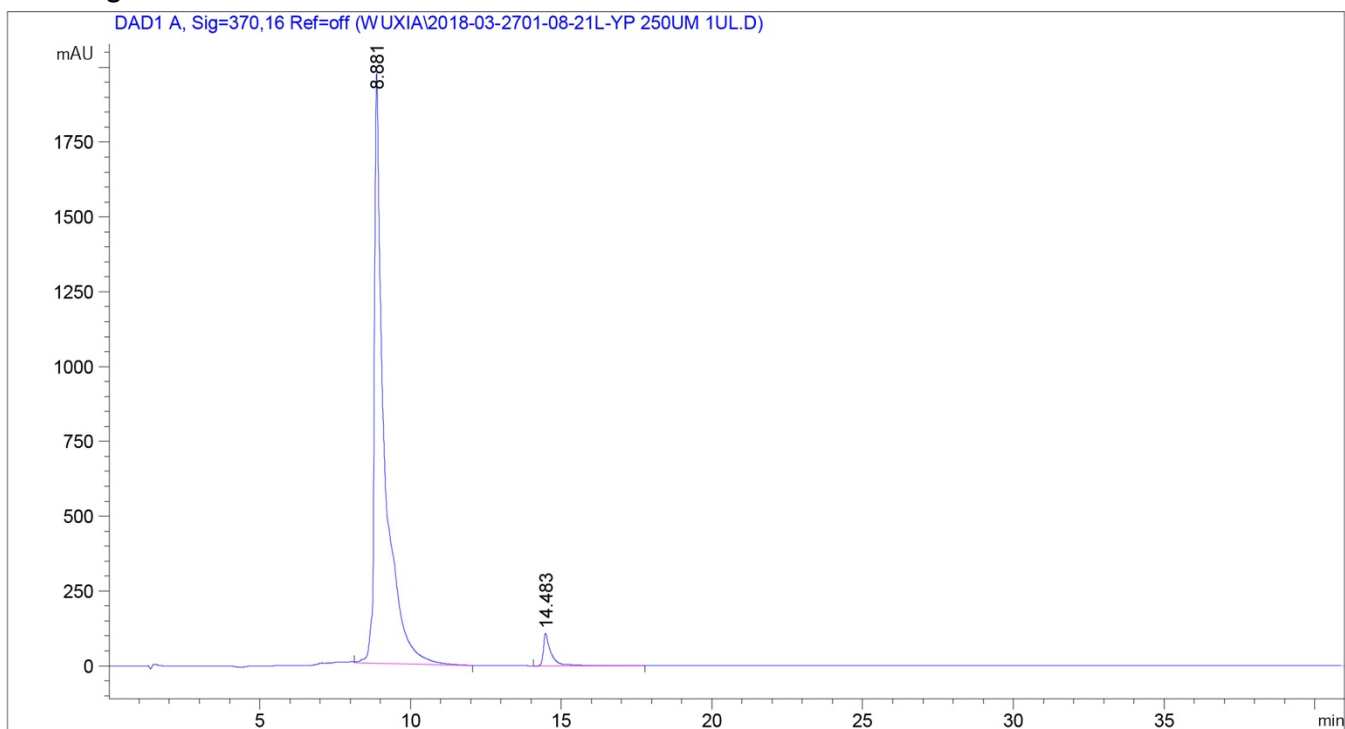
**Sample:** Compound 1 (250 µM)

**Injection Volume:** 10 µL

**Eluent:** Acetonitrile/Water+ 0.1% TFA

**Column flow:** 0.3 mL/min

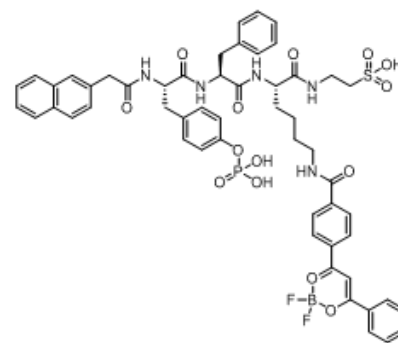
**Wavelength:** 370 nm



Peak #	RetTime [min]	Type	Width [min]	Area [mAU*s]	Height [mAU]	Area %
1	8.881	VB	0.3071	4.54509e4	1970.57727	95.8781
2	14.483	BB	0.2407	1953.99390	109.25017	4.1219

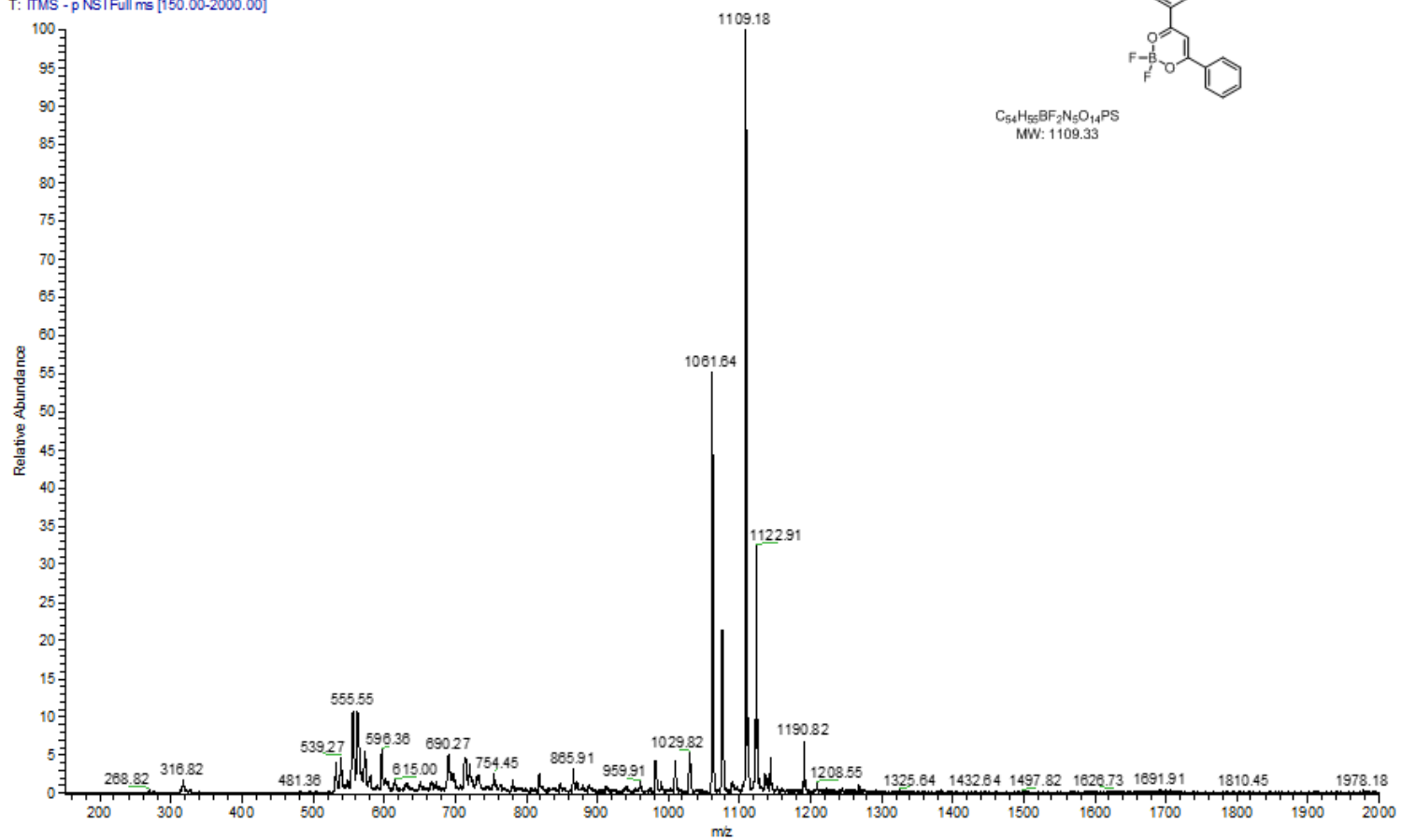
# Compound 1

MS (ESI) found 1109.18 [M]



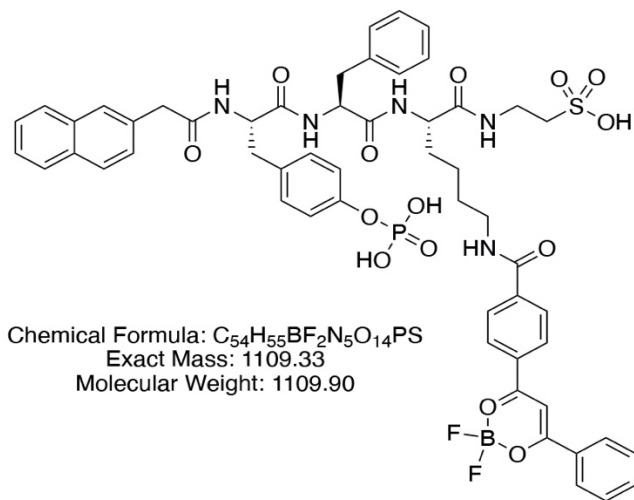
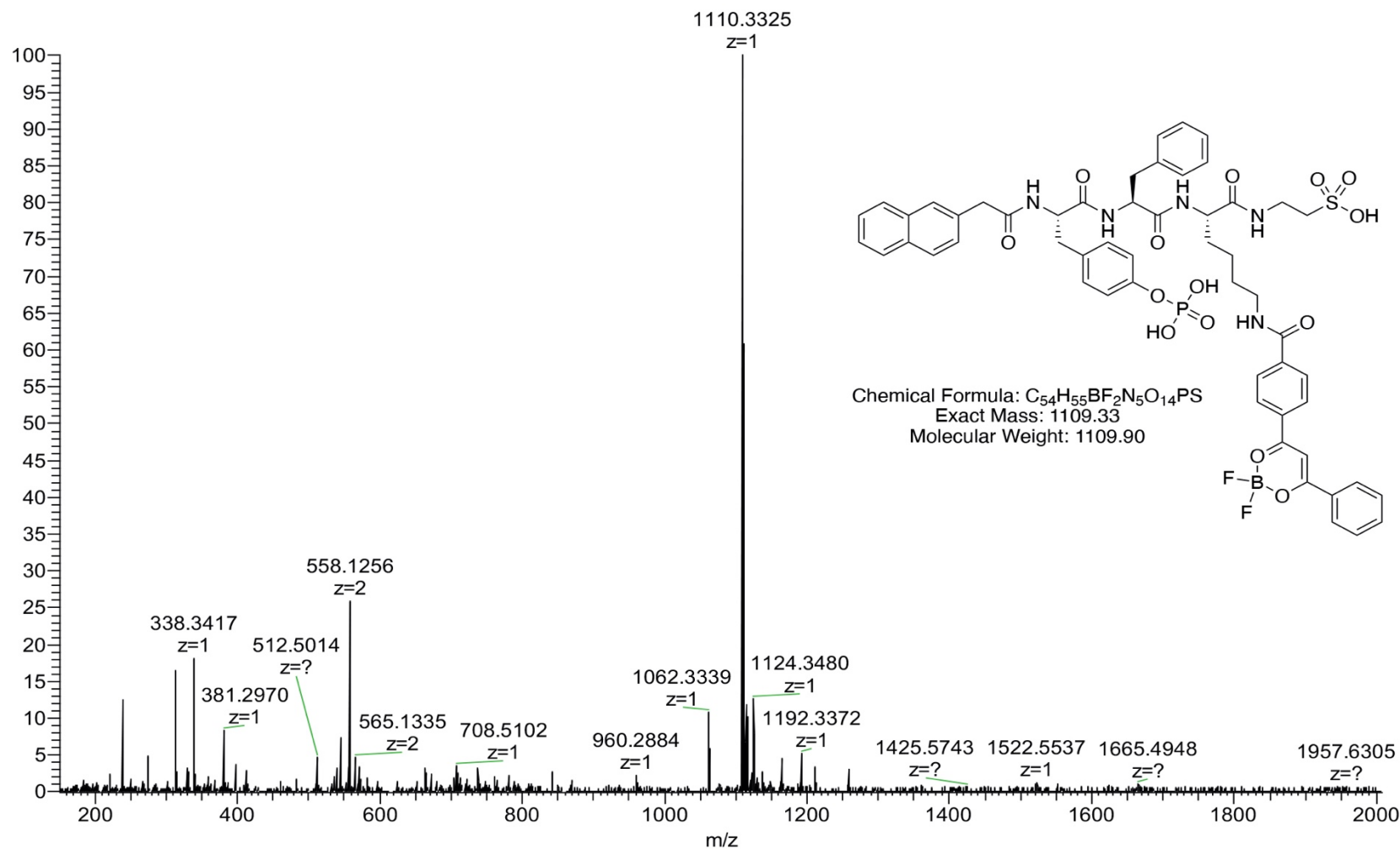
C<sub>54</sub>H<sub>62</sub>BF<sub>2</sub>N<sub>5</sub>O<sub>14</sub>PS  
MW: 1109.33

201903081\_190308231000 #2468 RT: 8.95 AV: 1 NL: 8.59E4  
T: ITMS - p NSI Full ms [150.00-2000.00]

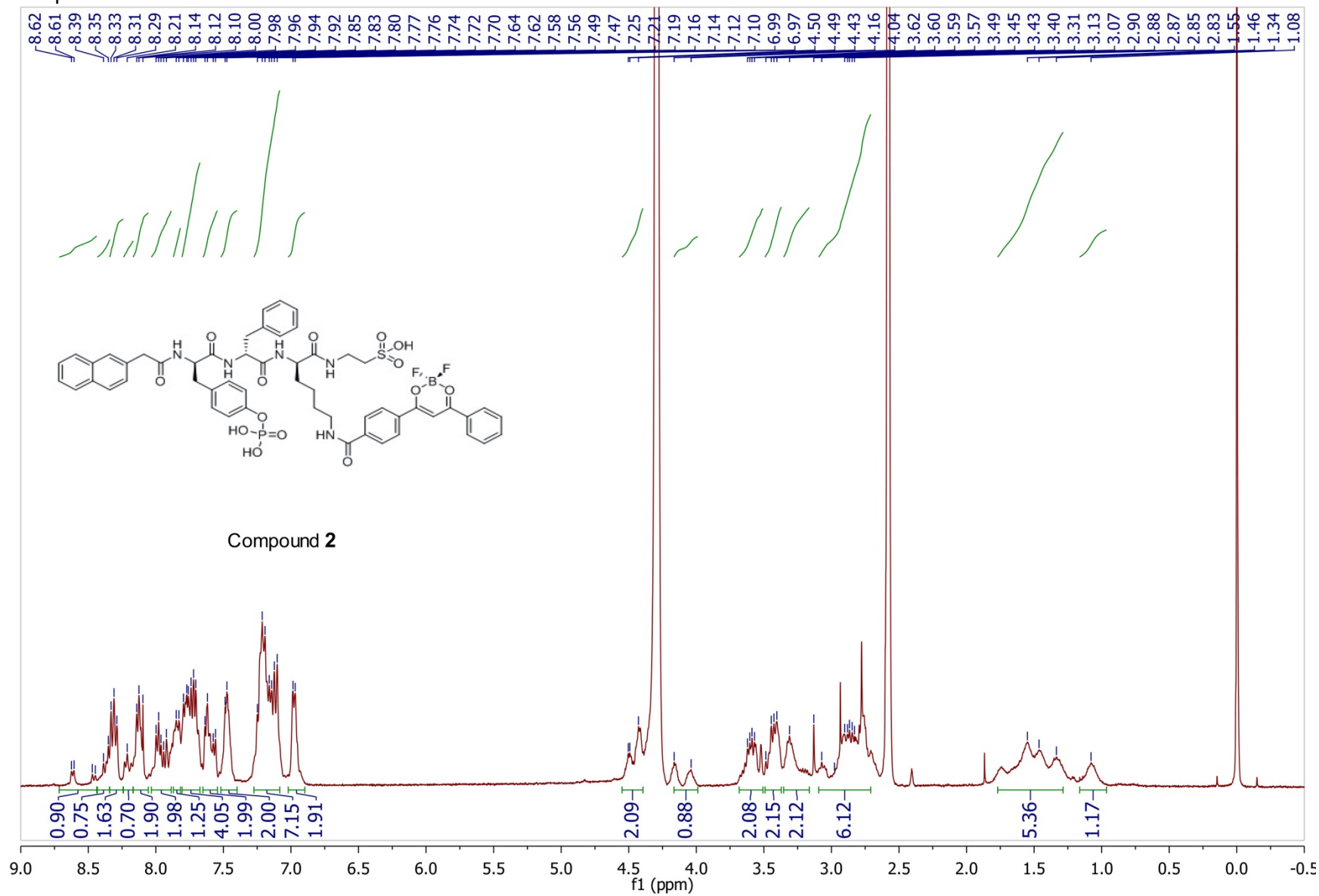


HRMS found 1110.3325 [M+H]<sup>+</sup>

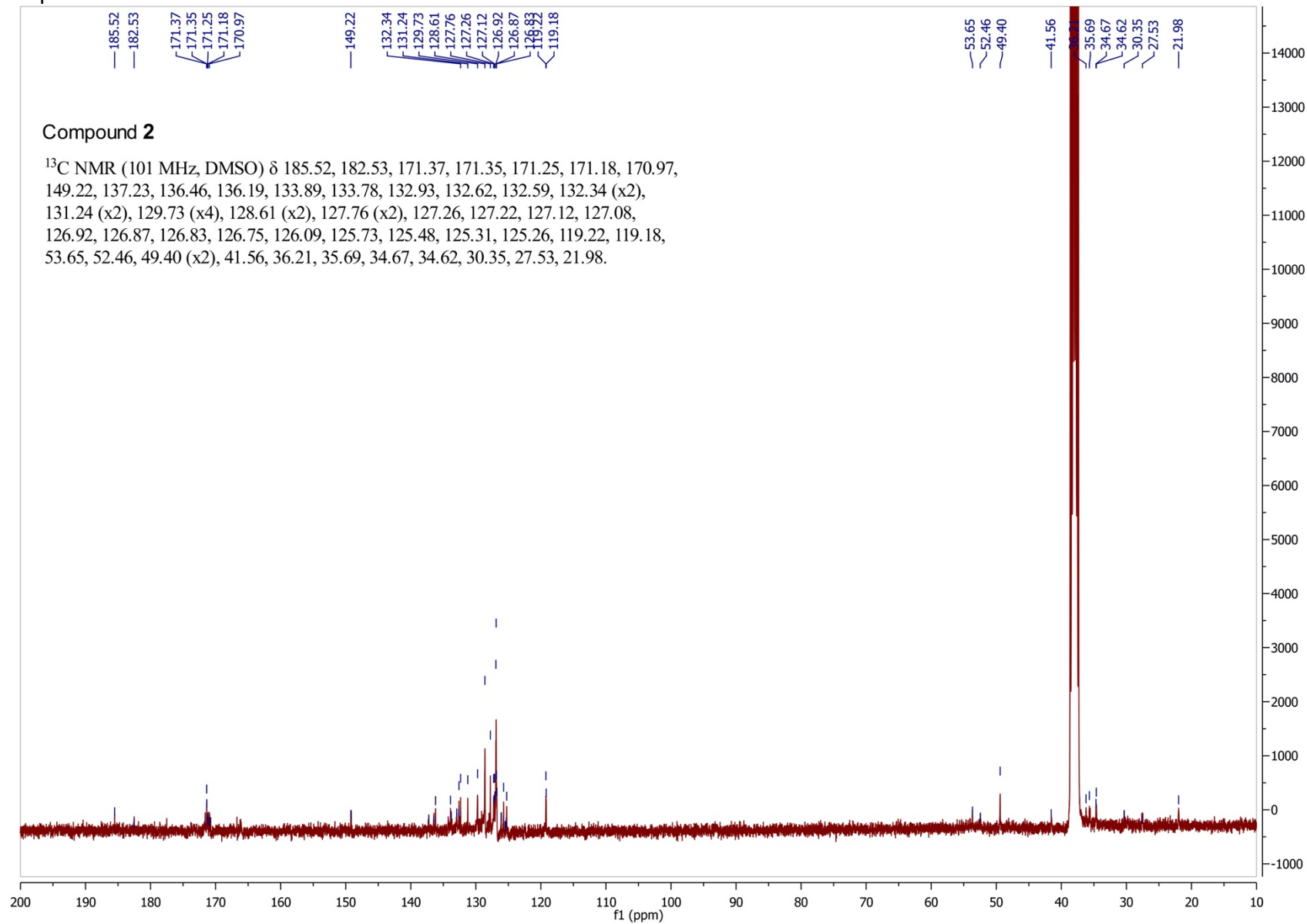
HRMass Spectra of Compound 1



### Compound 2

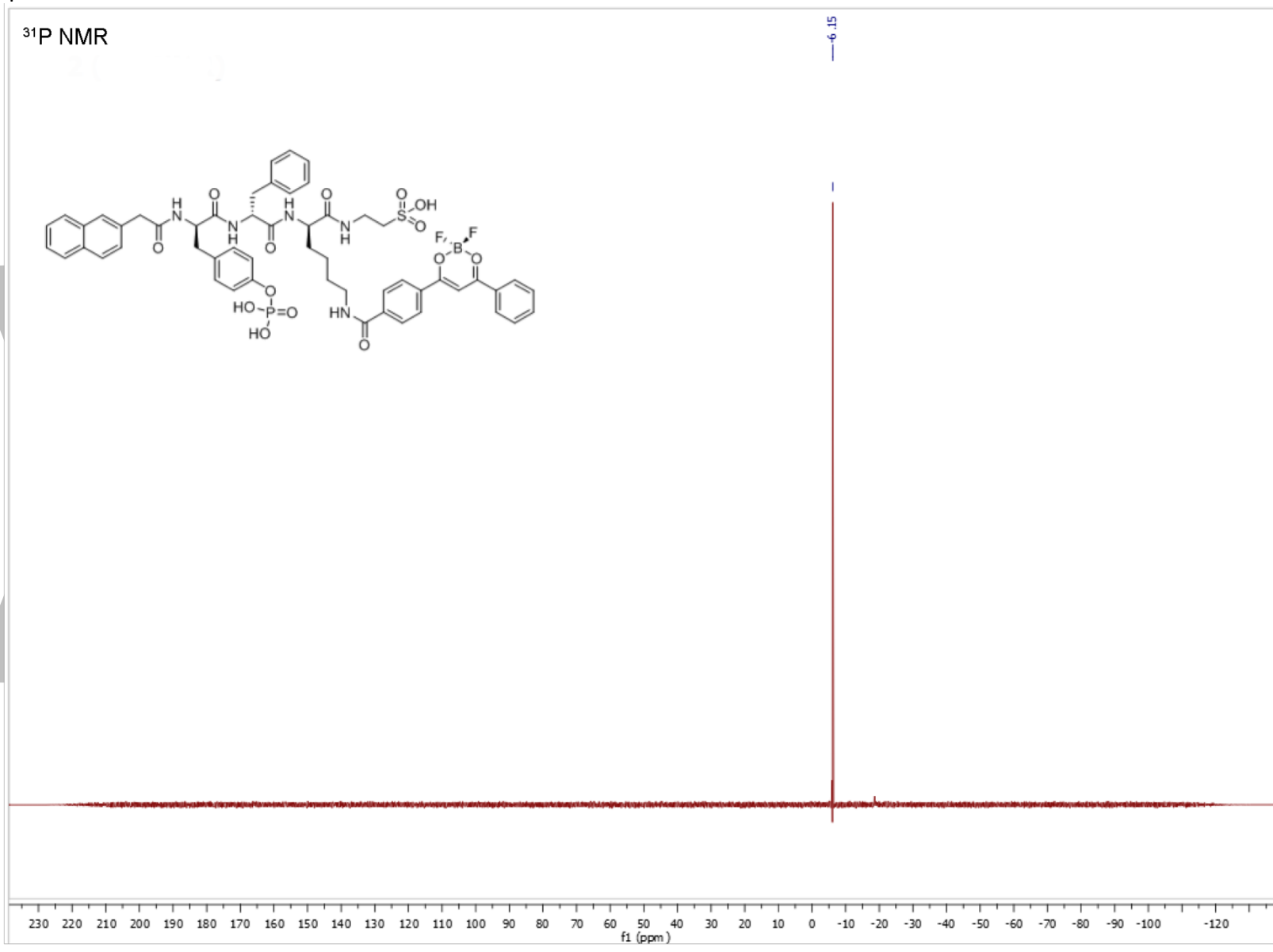


# Compound 2





# Compound 2



HPLC

**Instrument:** Agilent 1220

**Column:** 2.1 mm x 150 mm (130 Å) Xbridge C-18

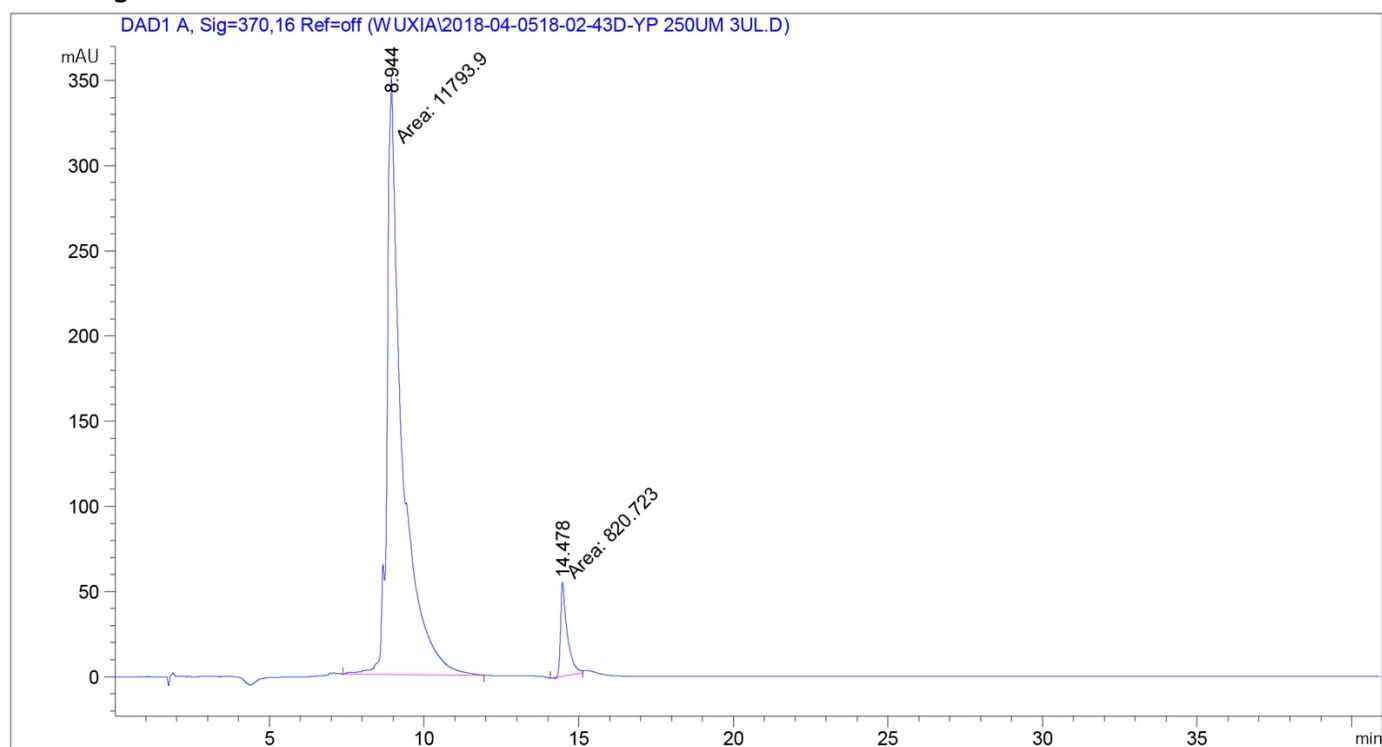
**Sample:** Compound 1 (250 µM)

**Injection Volume:** 10 µL

**Eluent:** Acetonitrile/Water+ 0.1% TFA

**Column flow:** 0.3 mL/min

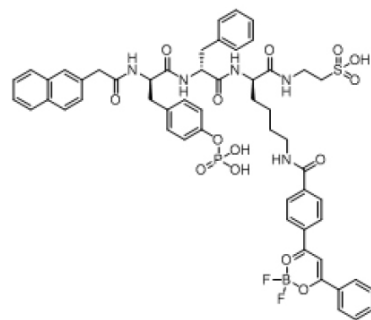
**Wavelength:** 370 nm



Peak #	RetTime [min]	Type	Width [min]	Area [mAU*s]	Height [mAU]	Area %
1	8.944	MM	0.5596	1.17939e4	351.24084	93.4939
2	14.478	MM	0.2486	820.72266	55.02317	6.5061

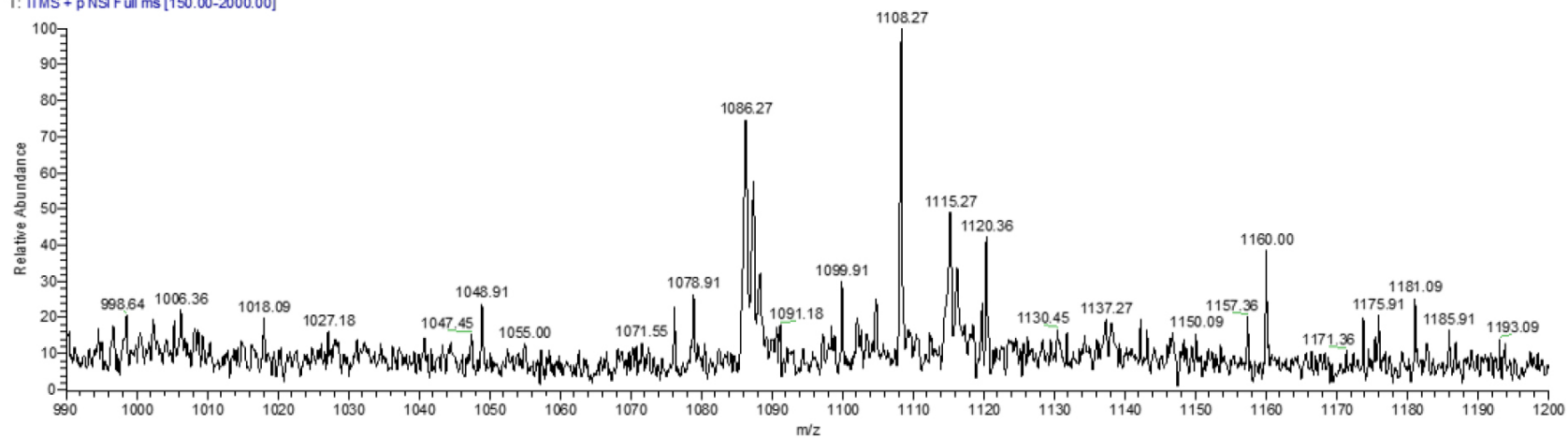
## Compound 2

MS (-ESI) found 1108.27 [M-H]<sup>+</sup>



C<sub>50</sub>H<sub>55</sub>BF<sub>2</sub>N<sub>6</sub>O<sub>14</sub>PS  
MW: 1109.33

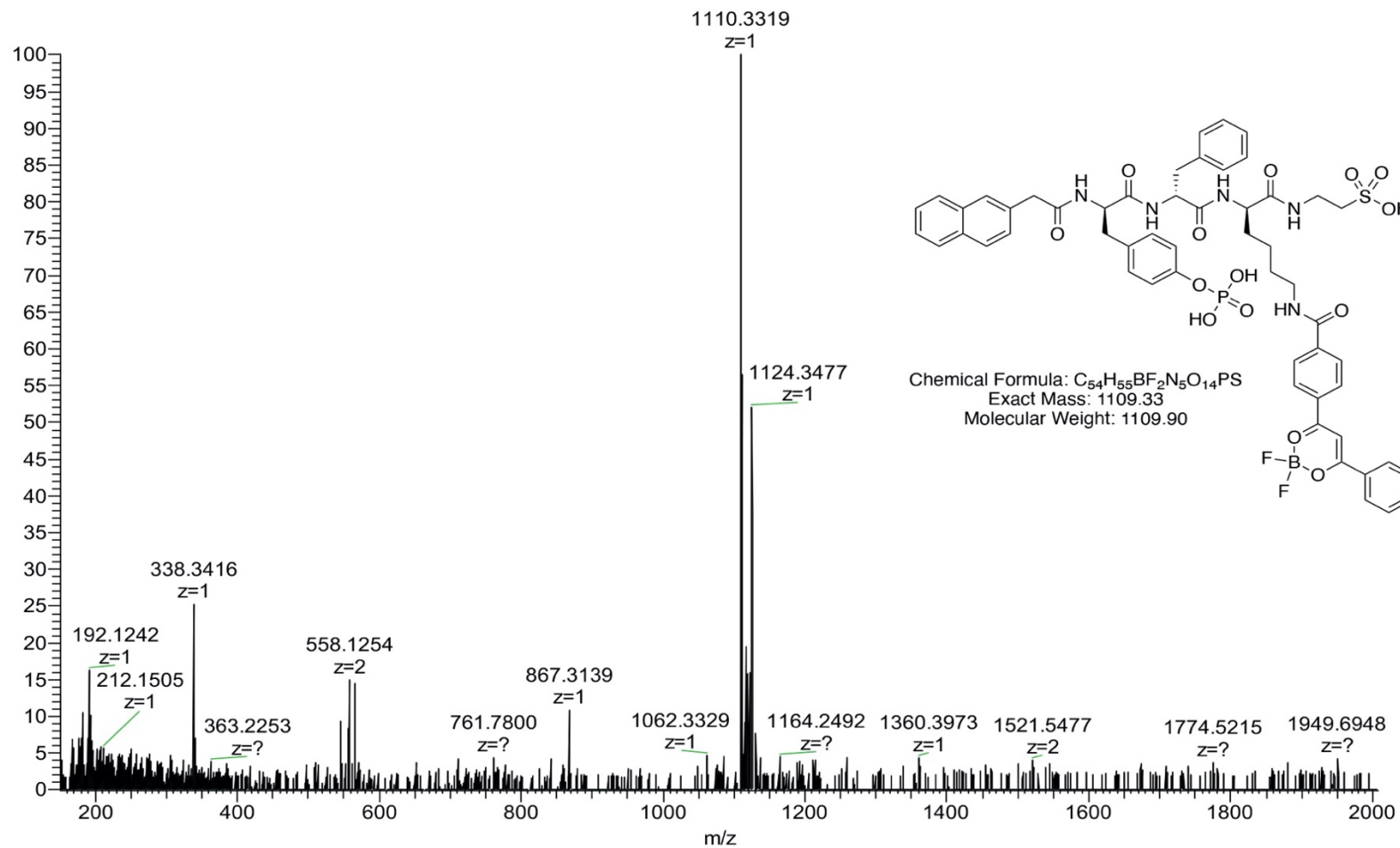
NapYpFKT-dbm (D) #62 RT: 0.59 AV: 1 NL: 1.00E3  
T: ITMS + p NSI Full ms [150.00-2000.00]



Compound 2

HRMS found 1110.3319 [M+H]<sup>+</sup>

HRMass Spectrum of Compound 2



CD spectra of compound 1 and 2

